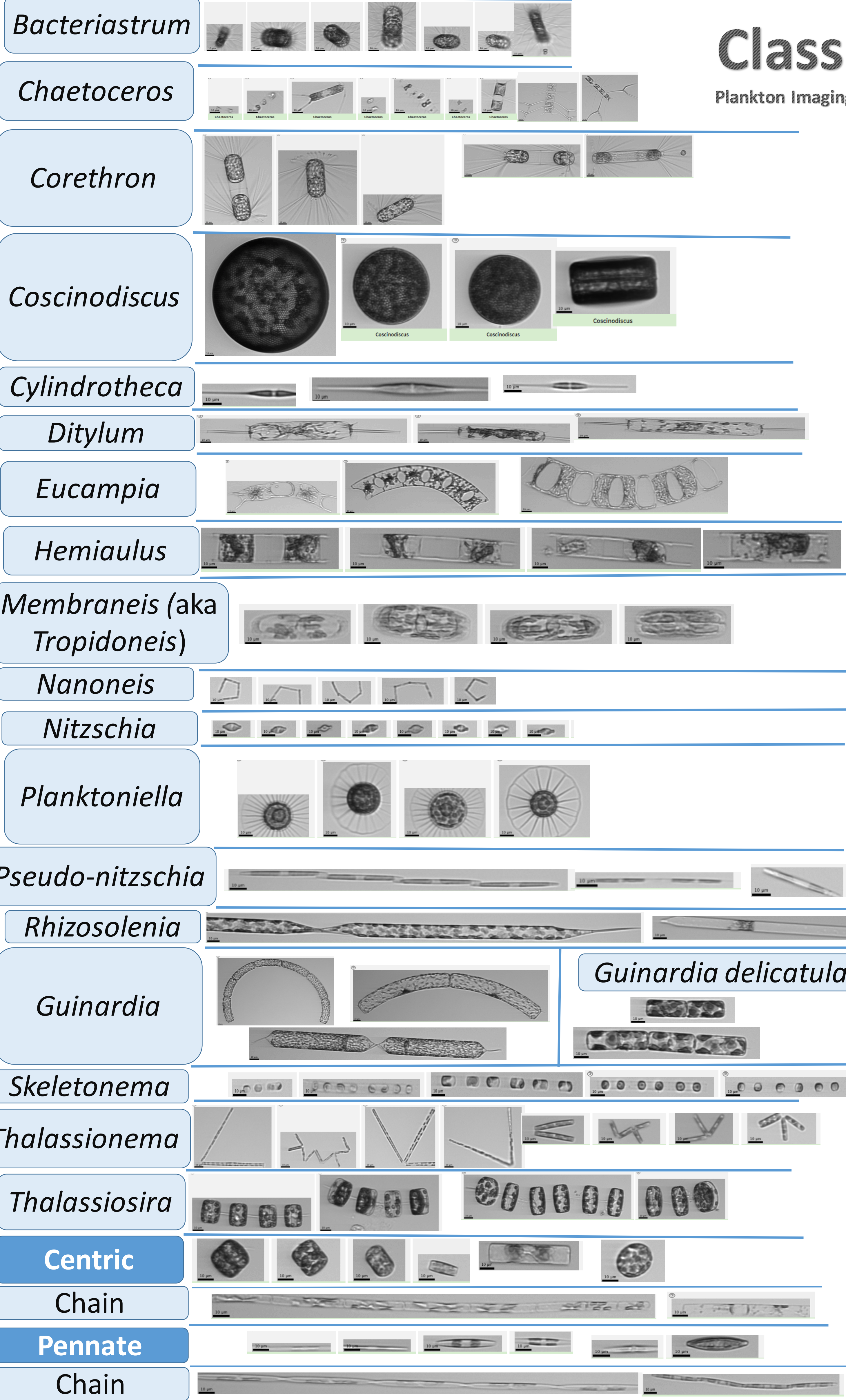


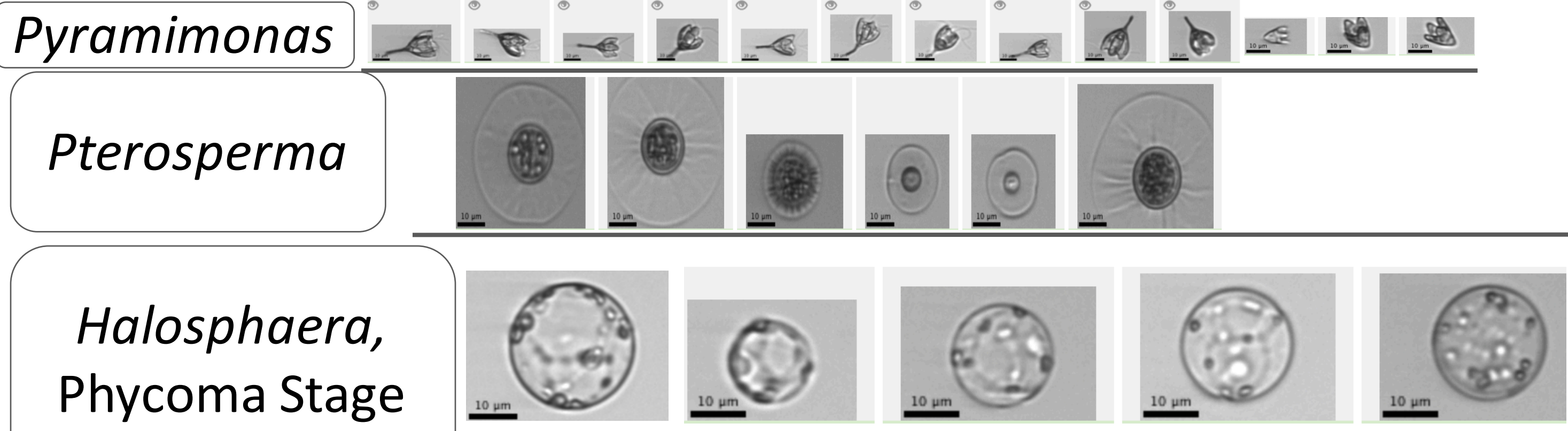
EcoTaxa Classification

Plankton Imaging Lab, University of Maine

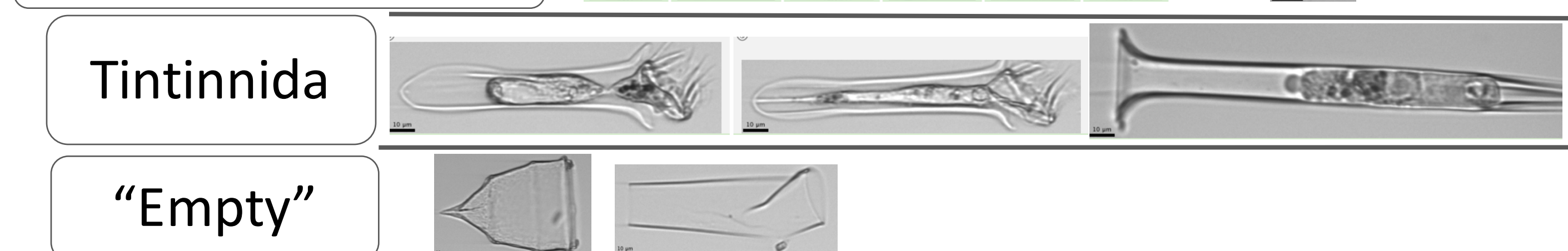
Bacillariophyta (Diatoms)



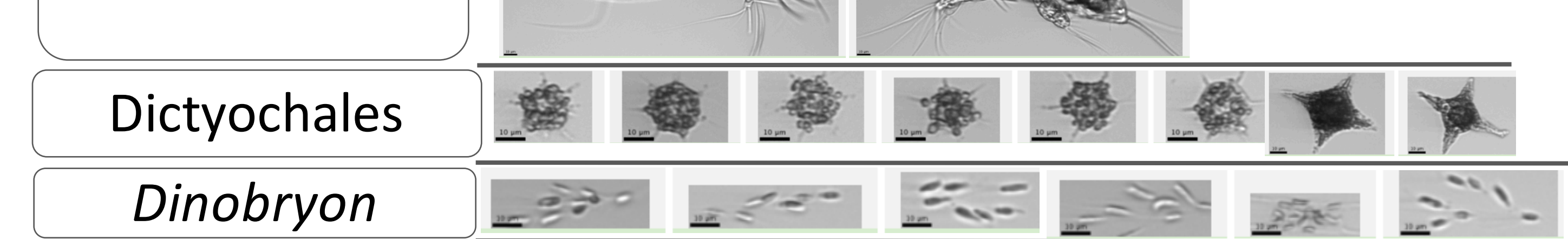
Chlorophyta (Chlorophytes)



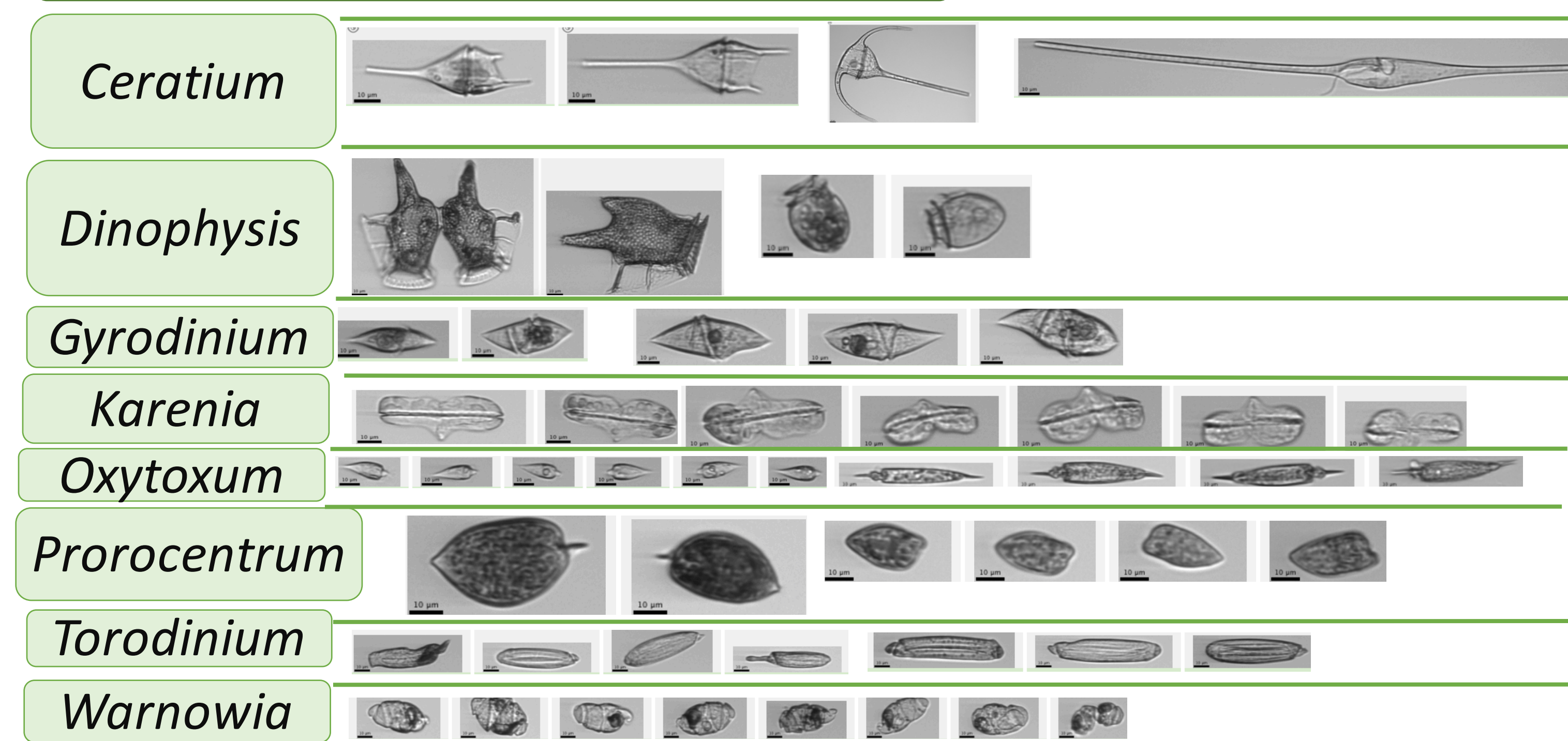
Ciliophora (Ciliates)



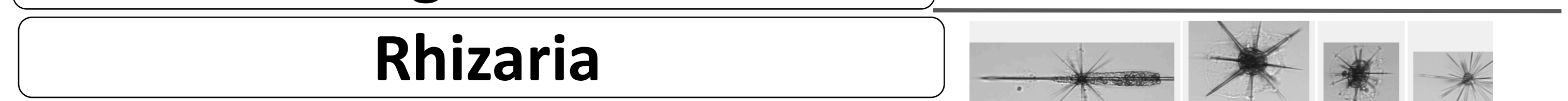
Crustacea



Dinophyceae (Dinoflagellates)



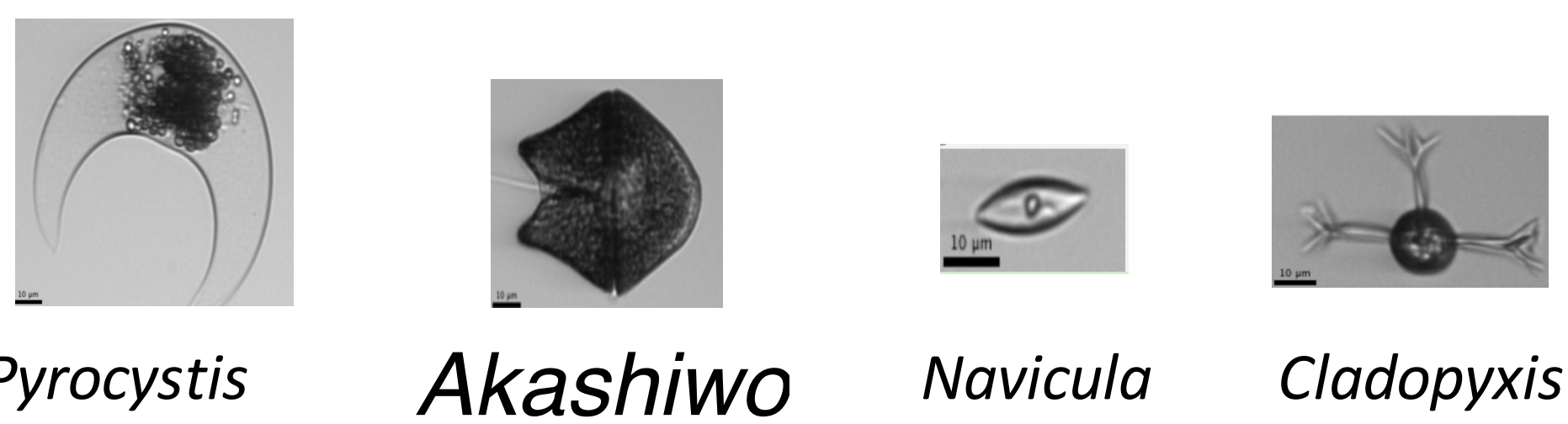
Euglenida



Rhizaria



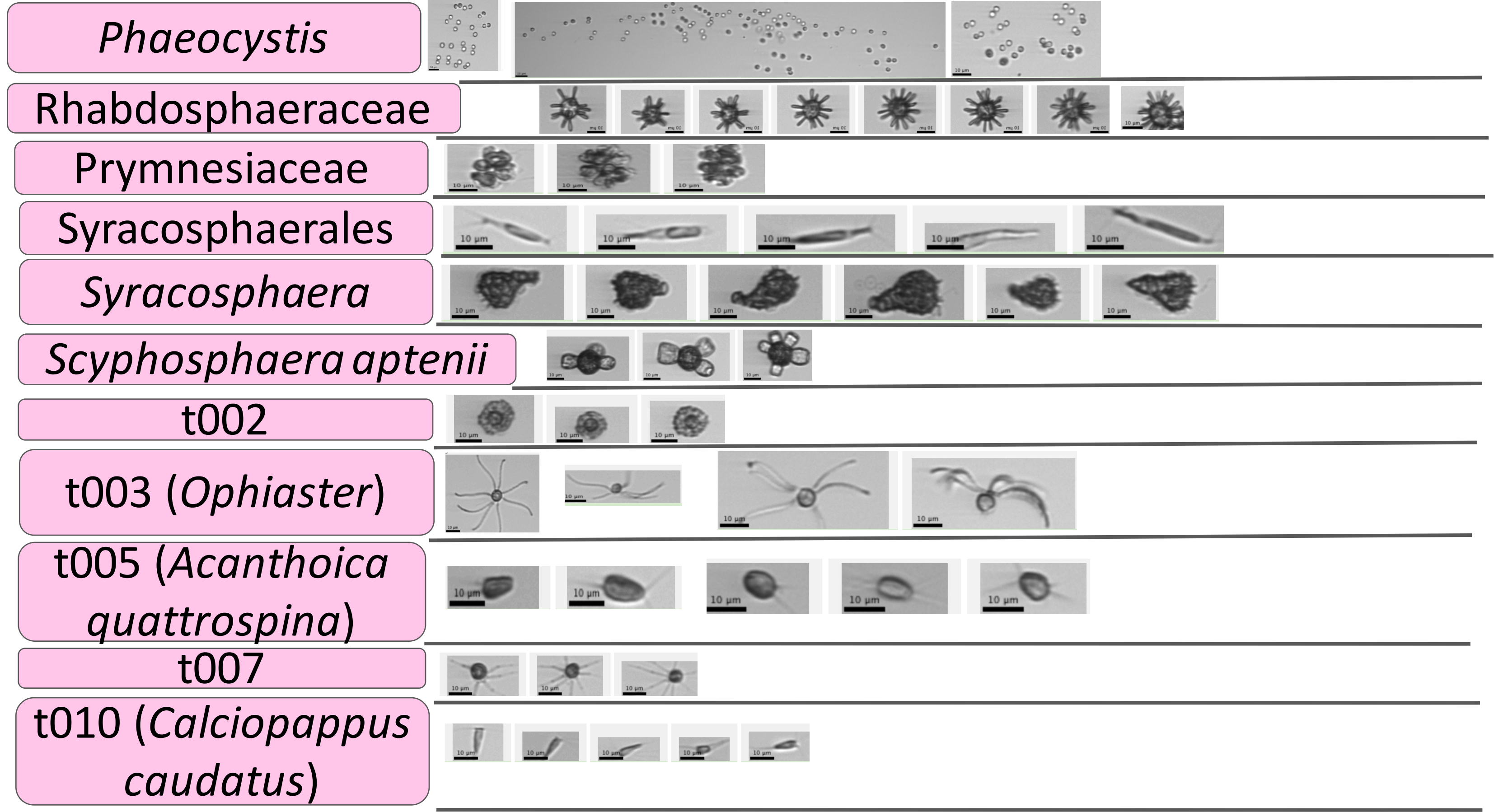
Other Occasional Phytoplankton we See:



Helpful Suffixes:

- phyta Division
- phyceae Class
- ales Order
- aceae Family

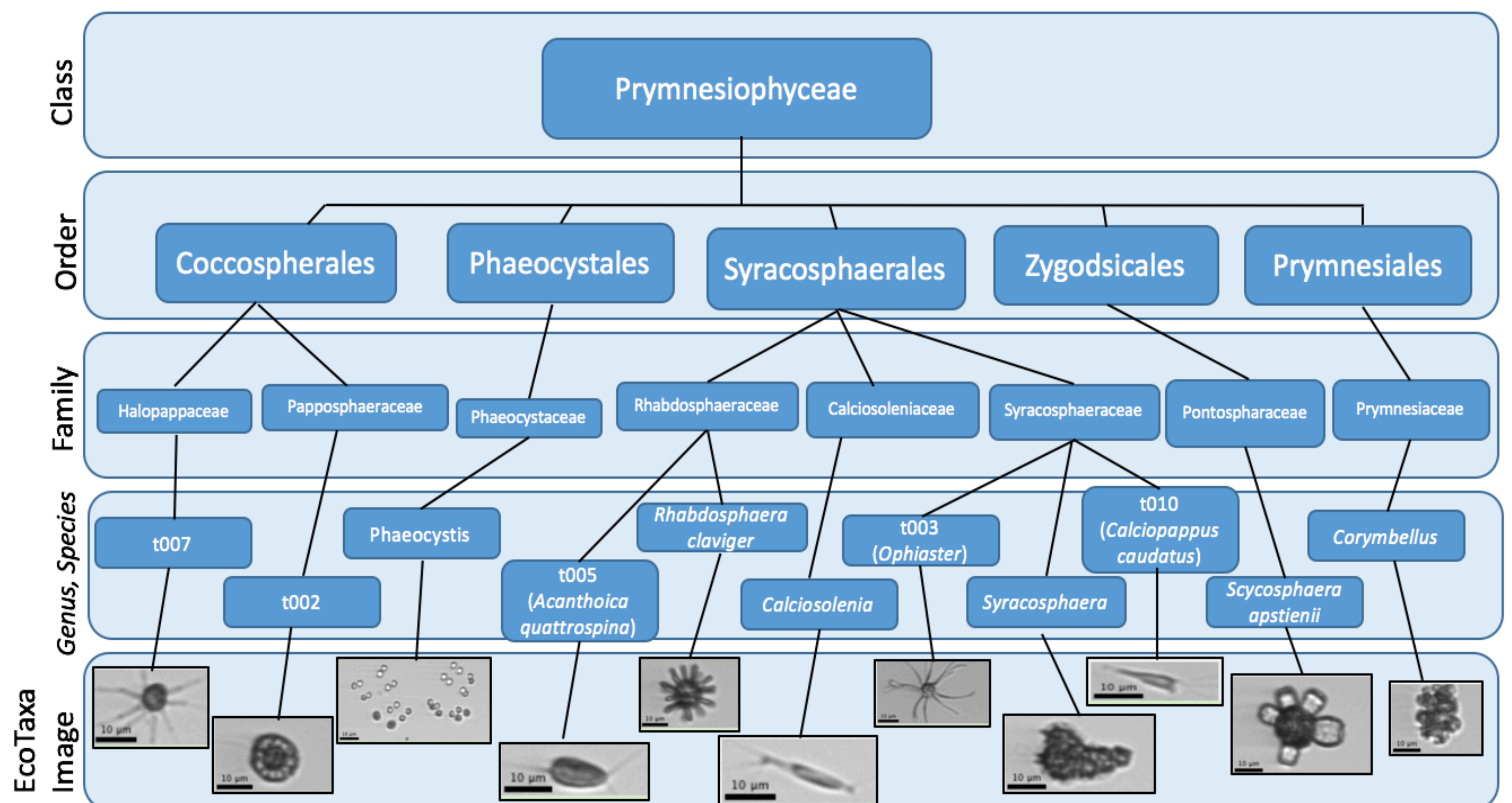
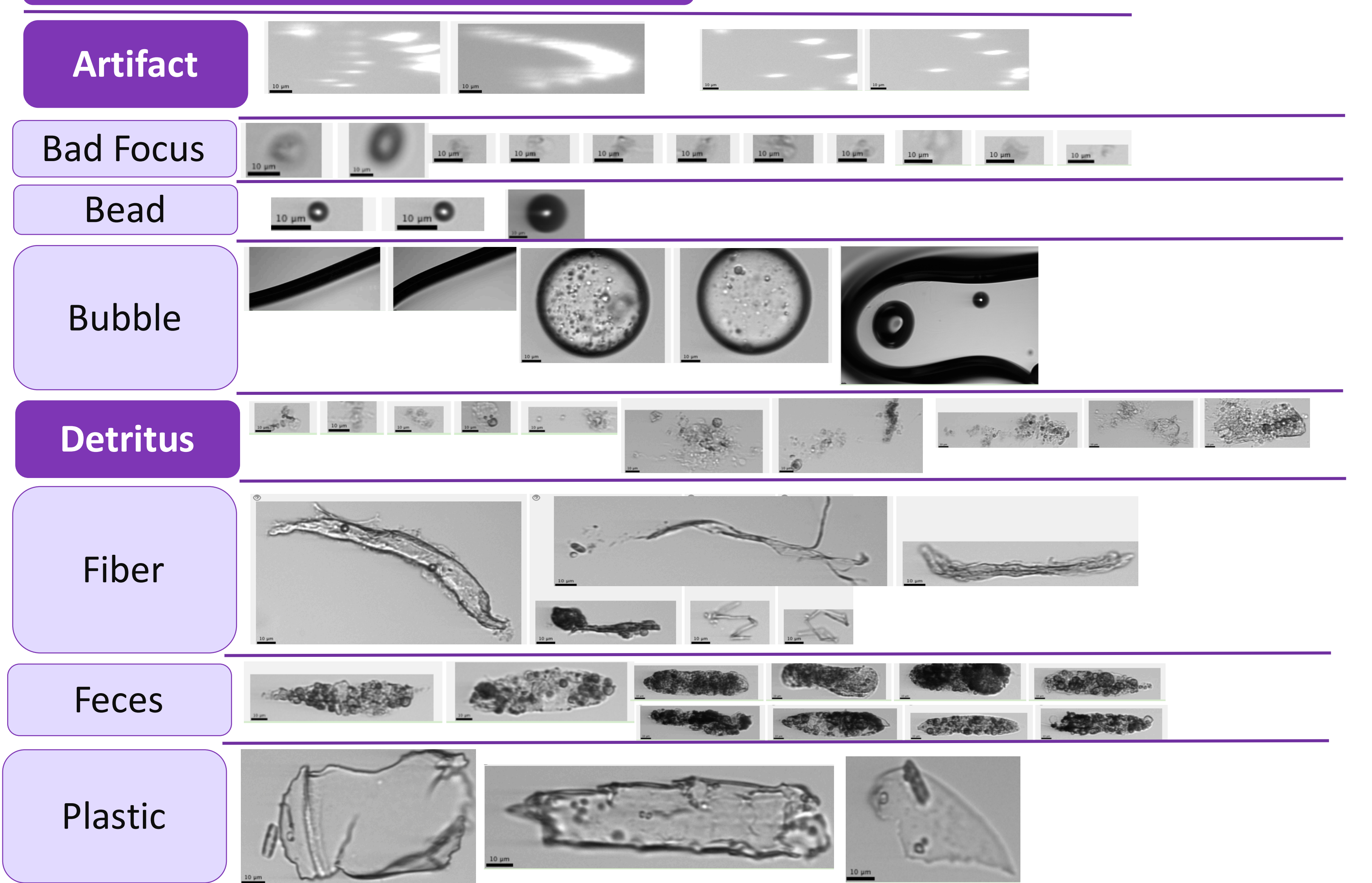
Prymnesiophyceae



Other - Living



Other - Not Living



Division (Phylum)	Class	Common name and example genera in EcoTaxa
Cyanophyta*	Cyanophyceae	<i>Synechococcus</i> <i>Trichodesmium</i> <i>Prochlorococcus</i>
Heterokontophyta	Bacillariophyceae	Diatoms
	Chrysophyceae	<i>Dinobryon</i>
	Pelagophyceae*	Pelagophyte <i>Pelagomonas</i>
Haptophyta	Prymnesiophyceae	<i>Phaeocystis</i> Coccolithophores
	Cryptophyceae*	<i>Cryptomonas</i>
Dinophyta	Dinophyceae	Dinoflagellates
Euglenophyta	Euglenophyceae	<i>Euglena</i>
Chlorophyta	Chlorophyceae	Chlorophytes <i>Pyramimonas</i>
	Prasinophyceae	<i>Pterosperma</i>