



SEA-BIRD ELECTRONICS, INC.

1808 136th Place N.E., Bellevue, Washington 98005 USA

Telephone: (425) 643-9866 Telex: 292915 SBEI UR

Fax: (425) 643-9954

email: seabird@seabird.com

SBE P/N 50155

DATE	SYM	REVISION RECORD	AUTH	DR	CHK

SBE 32 12/16 to SeaTech Fluorometer Mount Kit

KIT CONTENTS

SBE P/N	Manufacturer P/N	Primary SBE Application	QTY
23746	SBE 32 to SBE 19 Mount Bar	Vertical Bar secures mount fixture to carousel	1
23838	SBE 32 to SBE 19 Mount Pin	Pin secures top of bar to Carousel Adapter Plate	1
23907	Modified ST Fluor Mount Plate	Bolts onto bar to secure ST Fluorometer to fixture	1

HARDWARE

SBE P/N	Part Description	Primary SBE Application	QTY
30178	Mach Screw, 10-24 x 3/4 FH	Securing bolts for ST Brackets to ST mount Plate	4
30254	Washer, 1/4 Split Ring Lock	Used with Mount Plate to Bar Bolts (30360)	4
30259	Washer, 1/2" Flat, narrow	Used with Mount Pin securing screw (30603)	1
30360	Bolt, 1/4-20 x 1" Hex	Mount Plate to Bar Bolts	4
30377	Bolt, 1/4-20 x 1-1/4 Socket	Securing bolts for ST Fluor brackets	2
30570	Washer, 1/4" Flat	Used with Mount Plate to Bar Bolts (30360)	4
30594	Washer, 1/2" Split Ring Lock	Used with Mount Pin securing screw (30603)	1
30603	Screw, 1/2-13 x 3-1/2" Socket	Mount Pin securing screw	1

ST Mount Kit Assembly and installation

A. Install Brackets onto Mount Plate

1. Inject bracket holes with DC-4.
2. Brackets install onto the flat side of the mount plate.
3. Threaded holes on brackets line up with countersunk holes on plate.
4. Secure from plate side with 4 screws (30178), sunk into the countersinks.

B. Install Bar onto Mount Plate

1. Inject DC-4 into mount bar holes.
2. Mount bar snaps onto plate, such that all 4 bar holes line up with holes on the plate.
3. Slide lock washer then flat washer over threads of the bolts (30360) and secure bar to plate.

C. Install Mount pin to secure fixture

1. Install onto carousel such that lower pin hole on bar fits over a pin on lower adapter plate.
2. Press until upper portion just slips in underneath upper adapter plate.
3. Slide lock washer then flat washer over bolt (30603) and slide bolt through the mount pin, such that head of bolt is contacting the larger flatter side of the pin.
4. Install pin through upper adapter plate, into the mount bar, and secure.

D. Install ST Fluorometer into mount brackets

1. Lightly install 1 screw (30377) into each bracket securing hole.
2. Slide Fluorometer carefully through the brackets and tighten screws.

SBE DRAWING: 67082

TITLE: SBE 32 to ST Fluorometer Mount Kit
Assembly

REV:

Sea-Bird Electronics Procedure

PROCEDURE NUMBER: 67082

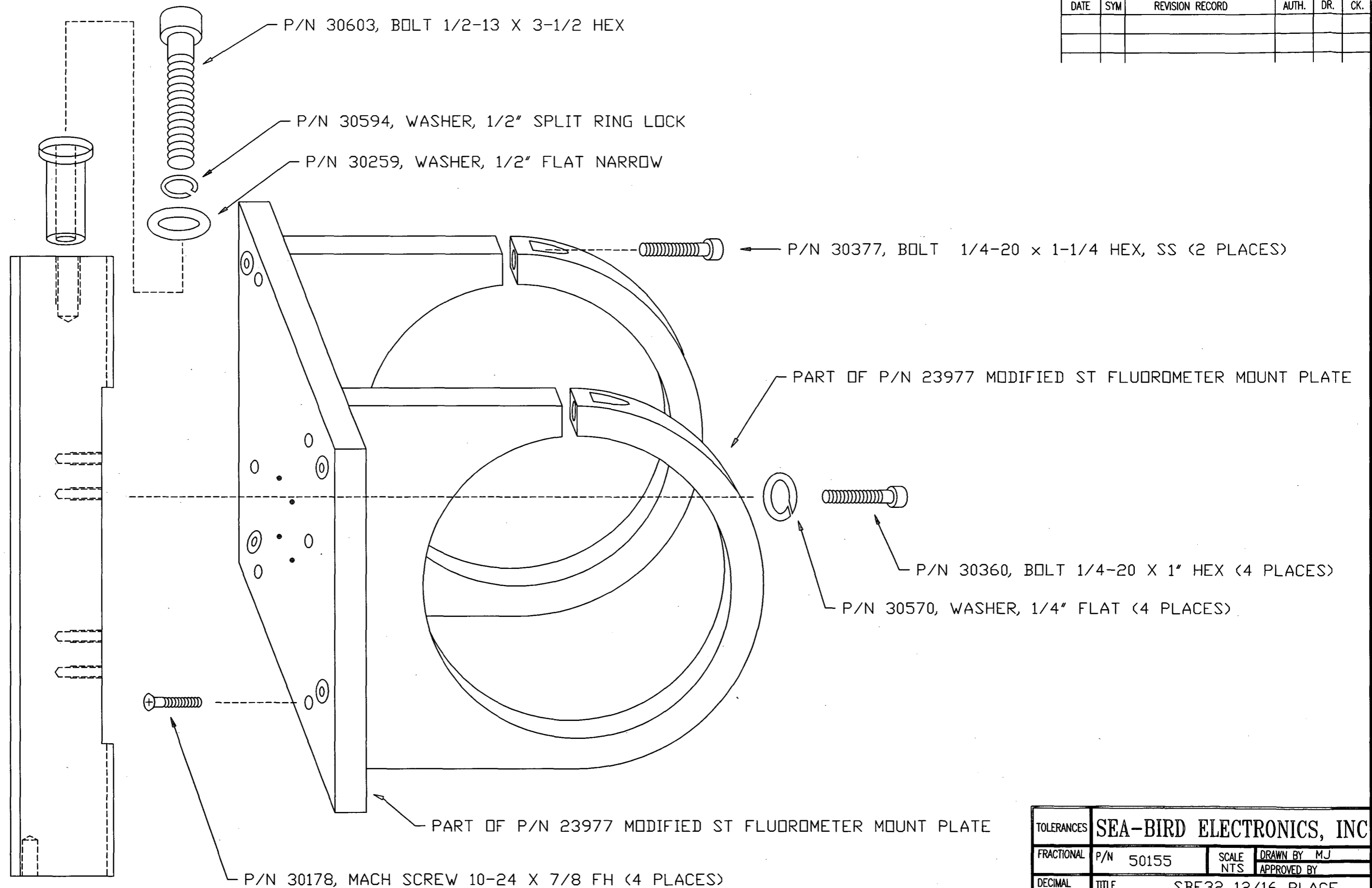
TITLE: **SBE 32 ST Fluor Mount Kit**

REVISION:

EFFECTIVE DATE: 11/22/2002

CHECKED BY: _____ PAGE 1 of 1

DATE	SYM	REVISION RECORD	AUTH.	DR.	CK.



TOLERANCES	SEA-BIRD ELECTRONICS, INC				
FRACTIONAL	P/N 50155	SCALE NTS	DRAWN BY MJ		
DECIMAL	TITLE SBE32 12/16 PLACE SEATECH MOUNT KIT				
ANGULAR	DATE 05.13.99	DRAWING NUMBER 67082	REV		

Handwritten signature or initials