



SEA-BIRD ELECTRONICS, INC.

13431 NE 20th Street, Bellevue, Washington 98005 USA
 Telephone: (425) 643-9866 Telex: 292915 SBEI UR
 Fax: (425) 643-9954 Email: seabird@seabird.com

DATE	SYM	REVISION RECORD	AUTH	DR	CHK
8/10/04	A	Added drawing		KLP	

SBE P/N varies

SBE 37 IM/IMP/16p-IM/44 Cable Clamp Assembly Kit

UNIVERSAL KIT CONTENTS

SBE P/N	Manufacturer P/N	Primary SBE Application	QTY
30633	Washer, 1/4" Split Ring, Ti	Used with cable guide cap and cable clamp securing bolts	2
30634	Washer, 1/4" Flat, Ti	Used with cable guide cap and cable clamp securing bolts	2
30860	Mach Screw, 6-32x1/2" FH, Ti	Hold cable clamp half to flat area of sensor endcap	1
30900	Mach Screw, 1/4-20x2" Hex Ti	Secure cable guides/clamps to endcaps	2
31019	O-Ring, 2-008 N674-70	Placed on cable clamp 1/4-20 bolts as retainers	2
31020	Mach Screw, 4-40 x 1", FH, SS	Secures the guide pieces in place	4

SPECIFIC KIT CONTENTS (varies to specified wire size)

SBE P/N	Manufacturer P/N	Primary SBE Application	QTY
Varies	SBE37 Microcat Cable Clamp	Attach to flat surface of sensor ec., clamps to cable	2
Varies	SBE37 Microcat Cable guide, Part 1	Attach to cable guide base to lock down mooring cable	1
Varies	SBE37 Microcat Cable guide, Part 2	Attach to battery/connector endcap to hold cable	1

KIT PART NUMBERS

SBE P/N	Kit Description
50339	SBE37 Modular Cable Clamp Kit, 0.33", Custom (J32423)
50357	SBE37 Modular Cable Clamp Kit, 1/4"
50358	SBE37 Modular Cable Clamp Kit, 5/16"
50359	SBE37 Modular Cable Clamp Kit, 3/8"
50360	SBE37 Modular Cable Clamp Kit, 1/2"
50361	SBE37 Modular Cable Clamp Kit, 5/8"
50413	SBE37 Modular Cable Clamp Kit, .540"

SBE P/N	Kit Description
50338	SBE37 Modular Cable Clamp Kit, 0.25", Custom
50362	SBE37 Modular Cable Clamp Kit, 6 mm
50358	SBE37 Modular Cable Clamp Kit, 8 mm
50364	SBE37 Modular Cable Clamp Kit, 10 mm
50365	SBE37 Modular Cable Clamp Kit, 12 mm
50361	SBE37 Modular Cable Clamp Kit, 16 mm
50482	SBE37 Modular Cable Clamp Kit, 18 mm

Install Sensor Endcap Cable Guide Assembly

1. Remove the bolt and washers from the endcap.
2. Install the circular guide piece onto the removable side of the endcap.
 - a. Align it so that the cut out center faces outward.
 - b. Secure into place with one 4-40 x 1" (31020).
3. Install the second guide piece into the endcap.
 - a. The longer flat surface faces out.
 - b. Secure into place with one 4-40 x 1" (31020).
4. Insert the cable in the opening of the guard pieces.
5. Secure the outer guide to the endcap.
 - a. Put one lock washer and one flat washer onto each bolt.
 - b. Insert each bolt back into the holes on the outside guide piece of the endcap.
 - c. Slide an o-ring over each bolt.
 - The o-rings should seat into the internal countersinks on the blocks.

SBE DRAWING NUMBER: 41338

REV:

TITLE: SBE37 IM/IMP/16P-IM/44 Cable Clamp Assembly Kit

Sea-Bird Electronics Procedure

PROCEDURE NUMBER: 67142

TITLE: SBE37 IM/IMP/16p-IM/44 Cable Clamp Assembly Kit

REVISION: A

EFFECTIVE DATE: 11/29/2010

CHECKED BY: _____ PC _____ PAGE 1 of 2



SEA-BIRD ELECTRONICS, INC.

13431 NE 20th Street, Bellevue, Washington 98005 USA
Telephone: (425) 643-9866 Telex: 292915 SBEI UR
Fax: (425) 643-9954 Email: seabird@seabird.com

Installing the Cable Clamp

1. Take one of the two identical blocks and install it in the cut out on the other end of the Microcat.
 - a. The side with the semi-circular cutout faces away from the sensor.
 - b. The small hole goes toward the outer edge of the Microcat and is secured with a 6-32 x 1/2" set screw (30860).
2. Insert the cable in the opening of the guard pieces.
 - a. There will be no slipping once this pair is tightened down so make sure it is in the correct place.
3. Secure the outer guide to the endcap.
 - a. Put one lock washer (30633) and one flat washer (30634) onto each 1-4 X 20 bolt (30900).
 - b. Insert each bolt back into the holes on the outside guide piece of the endcap.
 - c. Slide an o-ring over each bolt.
 - *The o-rings should seat into the internal countersinks on the blocks.*

SBE DRAWING NUMBER: 41338

REV:

TITLE: SBE37 IM/IMP/16P-IM/44 Cable Clamp
Assembly Kit

Sea-Bird Electronics Procedure

PROCEDURE NUMBER: 67142

TITLE: **SBE37 IM/IMP/16p-IM/44 Cable Clamp
Assembly Kit**

REVISION: A

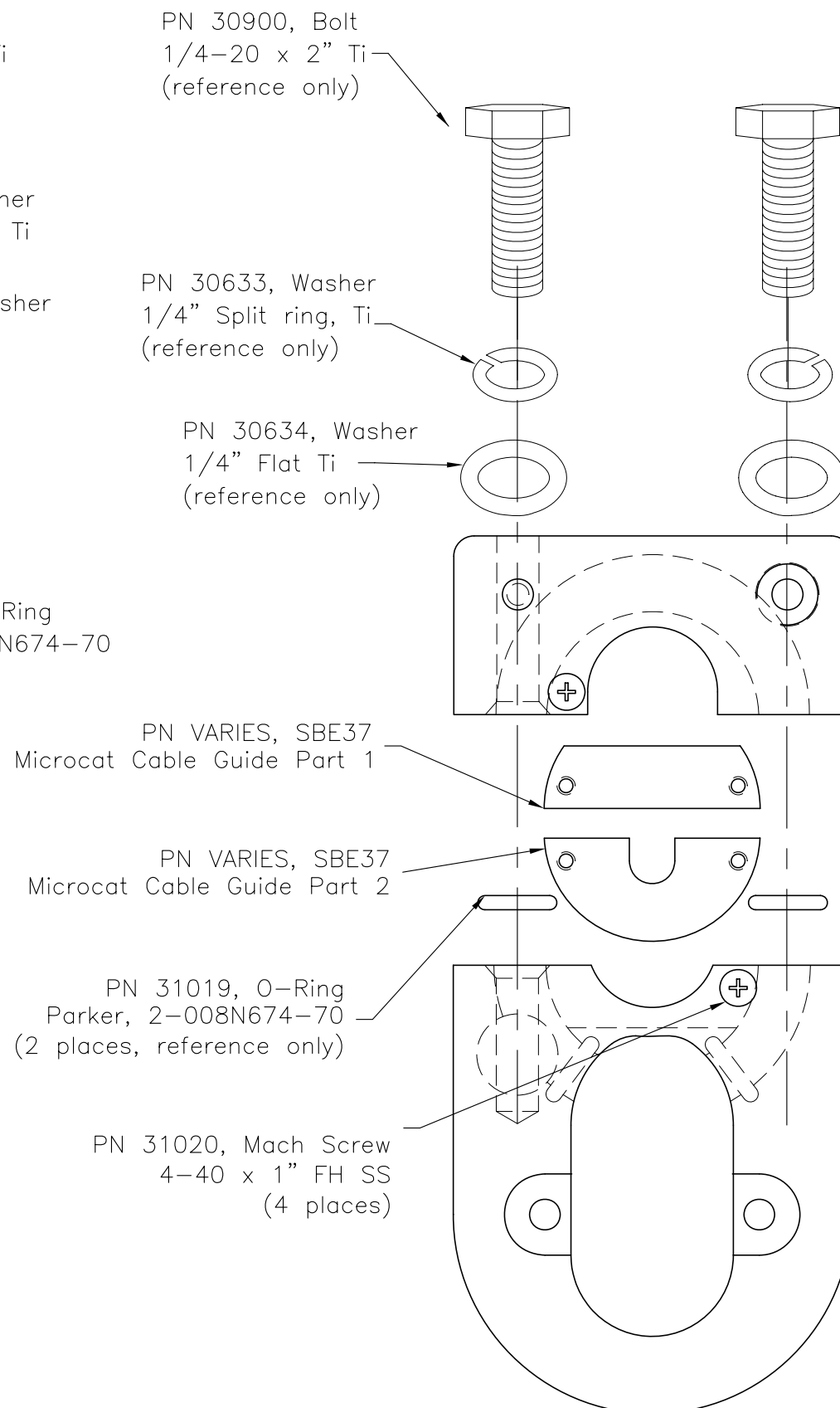
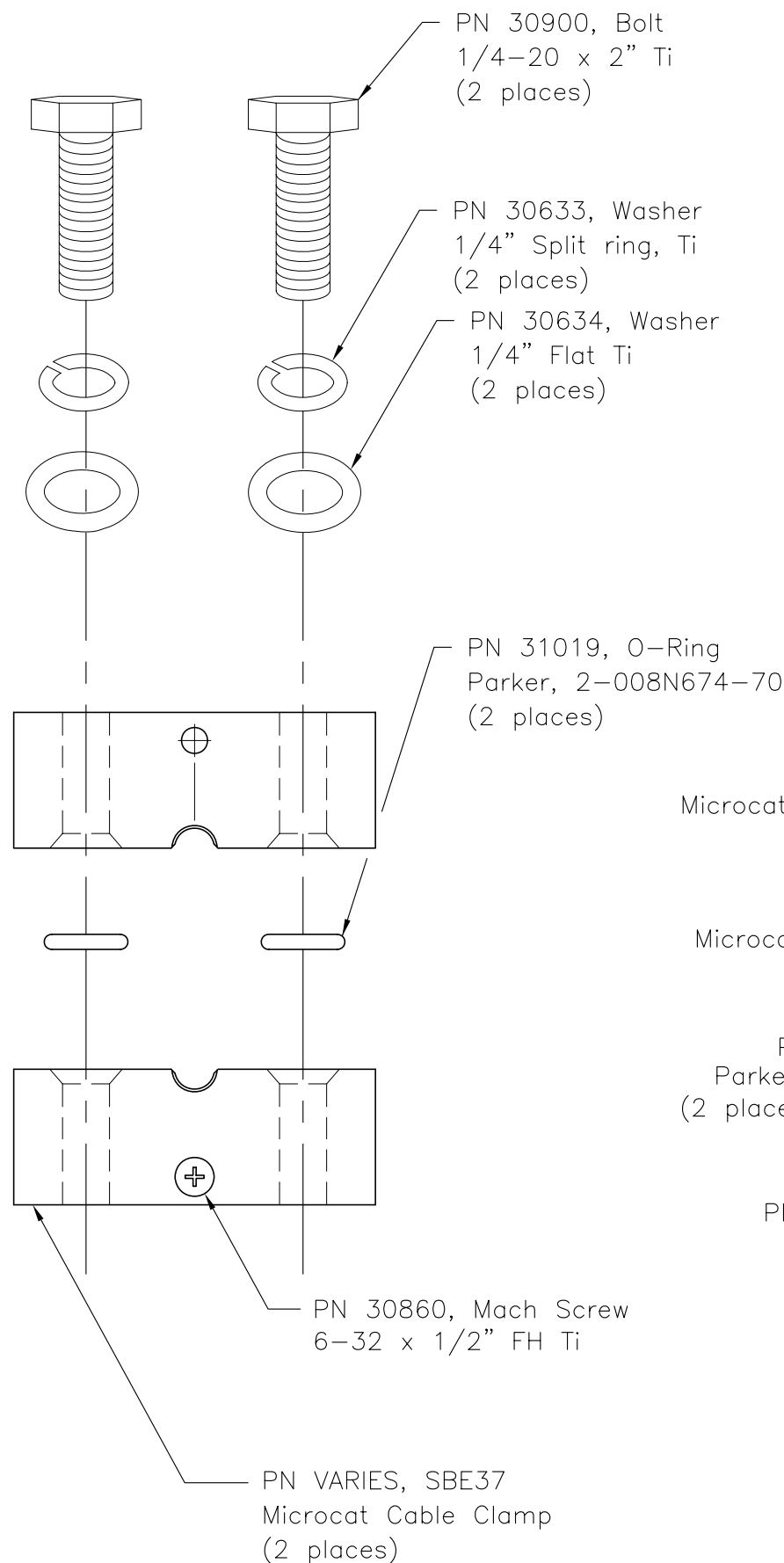
EFFECTIVE DATE: 11/29/2010

CHECKED BY: _____ PC _____ PAGE 2 of 2

DATE	SYM	REVISION RECORD	AUTH.	DR.	CK.
07.06	A	Complete Part Tables	RB	MJ	

TO SENSOR ENDCAP

TO CONNECTOR ENDCAP



Size	Cable Clamp	Guide Pt. 1	Guide Pt. 2	Kit P/N
Generic Blanks	231766	231738	233165	50395
5/32" OD	232221	232222	232223	
1/4" OD	231461	232381	232382	50357
5mm OD	232369			
6mm OD	231739	232387	232388	50362
7mm OD	232192			
8mm - 5/16" OD	231569	232379	232380	50358
3/8" OD	231722	232383	232384	50359
10mm OD	231740	232389	232390	50364
7/16" OD	233140	233142	233143	
11.3mm OD (custom)	232342	233081	233082	
1/2" OD	231738	232385	232386	50360
12mm OD	231741	232391	232392	50365
14mm OD	233238			
16mm OD	231762	232393	232394	50361
18mm OD	233000	234144	234145	50482

TOLERANCES	SEA-BIRD ELECTRONICS, INC			
FRACTIONAL	P/N SEE TABLE	SCALE NTS	DRAWN BY KLP APPROVED BY	
DECIMAL	TITLE SBE37 IM/IMP/16p-IM/44 CABLE CLAMP ASSEMBLY KIT			
ANGULAR	DATE 7.9.04	DRAWING NUMBER 41338	REV A	