

# Sea-Bird CTD and Water Sampling Systems



Photo by S. Compoin/Syrra



Photo by Paul deRoos



Photo by Christoph Gerigk © Sea-Bird Electronics



Photo by Nautilus Minerals

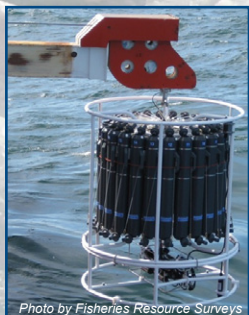


Photo by Fisheries Resource Surveys



Photo by Ken Baltz

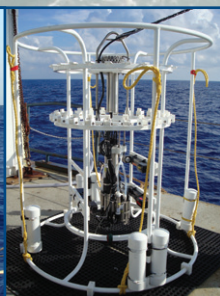
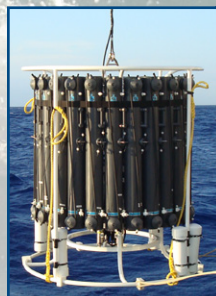


Photo by Plymouth Marine Lab

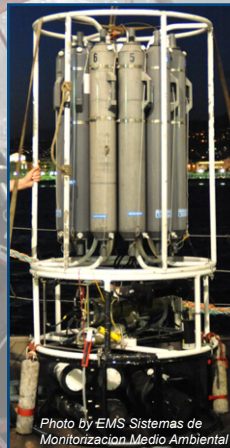


Photo by EMS Sistemas de Monitorizacion Medio Ambiental



Photo by MacArtney

- **Carousel Water Samplers:**  
 SBE 32 – 12 to 36 bottles, 1.7 to 30 liters  
 SBE 55 ECO – 3 to 6 bottles, 4 liters, 600 m  
 Trace metals sampler – 12 to 24 bottles, up to 12 liters
- **CTDs:** Compatible with all Sea-Bird profiling CTDs

Send us your photos with  
Sea-Bird equipment!



**Sea-Bird Electronics, Inc.**

13431 NE 20th Street, Bellevue, Washington 98005 USA

[www.seabird.com](http://www.seabird.com)

[seabird@seabird.com](mailto:seabird@seabird.com)

+1 425-643-9866