



SEA-BIRD ELECTRONICS, INC.

1808 136th Place N.E., Bellevue, Washington 98005 USA
Telephone: (425) 643-9866 Telex: 292915 SBEI UR
Fax: (425) 643-9954 email: seabird@seabird.com

DATE	REV	REVISION RECORD	AUTH	DR	CHK
6.7.05	A	Added tape to table, new drawing rev	CB	KLP	

SBE P/N 50211

SBE U-Bolt Clamp Set for 12-Bottle Extension Stands

KIT CONTENTS

SBE P/N	Manufacturer P/N	Primary SBE Application	QTY
23694	SBE 32 Cage U-Bolt	Interface Extension Stand to Lower Guard	4
23695	SBE 32 Cage Flange	Interface Extension Stand to Lower Guard	4
30210	Nut, 3/8-16 nylon stop	Extension stand U-Bolts; 1 on CTD bolt (30195)	8
30257	Washer, 3/8 flat	Used with Extension stand U-Bolts	8
30258	Washer, 3/8" Split Ring Lock	Used with Extension stand U-Bolts	8
30409	Tape, 1" Wide, Natural	Protects frame from rubbing	3 ft

Extension Stand Installation

Refer to SBE Assembly Drawing 40683 for Details

1. Wrap a solid layer of Teflon tape (30409) at each of 4 points around the extension stand.
 - a. Use ≈8" per wrap.
 - b. Wraps should be at approximately 90° intervals.
2. Set carousel on top of stand, such that all points are aligned.
3. Place U-bolt (23694) over carousel frame lower guard at each point where it intersects with a tape wrap.
4. Slide flange on from underneath.
5. Secure the assembly with 1 flat washer (30257), 1 lock washer (30258), and 1 stop nut (30210) per threaded end of each U-Bolt.

Parent Part Number: 50211

SBE Drawings:

40683A CTD Extension Stand installation

Sea-Bird Electronics Procedure

PROCEDURE NUMBER: **67078**

TITLE: **SBE32 U-Bolt Clamp Assembly Kit**

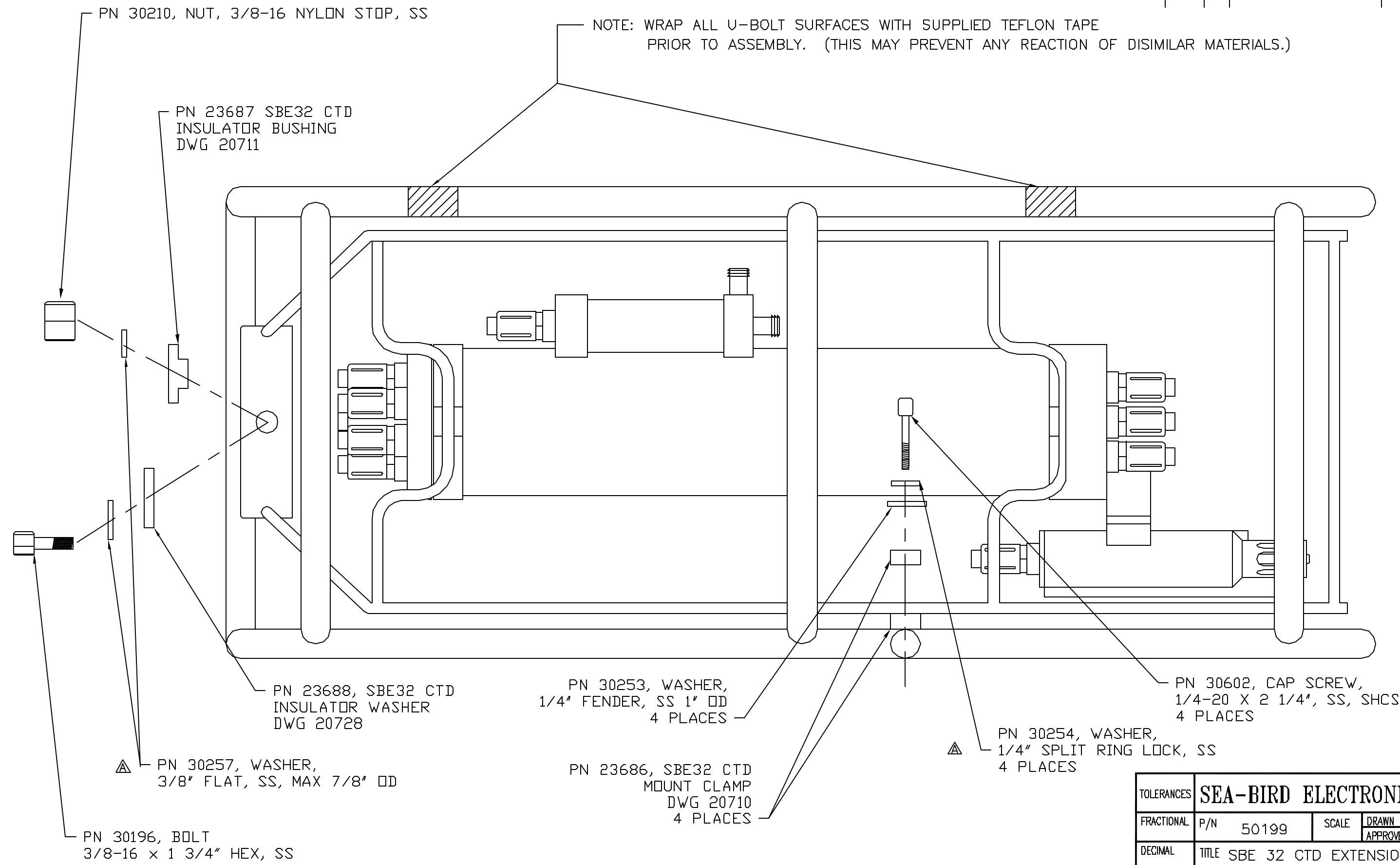
REVISION: **A**

EFFECTIVE DATE: **06/07/2005**

CHECKED BY:

PAGE 1 of 1

DATE	SYM	REVISION RECORD	AUTH.	DR.	CK.
8.27.03	A	ADDED WASHERS		KLP	



NOTE: WRAP ALL U-BOLT SURFACES WITH SUPPLIED TEFLON TAPE PRIOR TO ASSEMBLY. (THIS MAY PREVENT ANY REACTION OF DISIMILAR MATERIALS.)

PN 30210, NUT, 3/8-16 NYLON STOP, SS

PN 23687 SBE32 CTD INSULATOR BUSHING DWG 20711

PN 23688, SBE32 CTD INSULATOR WASHER DWG 20728

PN 30257, WASHER, 3/8" FLAT, SS, MAX 7/8" OD

PN 30196, BOLT 3/8-16 x 1 3/4" HEX, SS

PN 30253, WASHER, 1/4" FENDER, SS 1" OD 4 PLACES

PN 23686, SBE32 CTD MOUNT CLAMP DWG 20710 4 PLACES

PN 30254, WASHER, 1/4" SPLIT RING LOCK, SS 4 PLACES

PN 30602, CAP SCREW, 1/4-20 X 2 1/4", SS, SHCS 4 PLACES

TOLERANCES	SEA-BIRD ELECTRONICS, INC				
FRACTIONAL	P/N	50199	SCALE	DRAWN BY DJM	
DECIMAL	TITLE SBE 32 CTD EXTENSION STAND CTD INSTALLATION				APPROVED BY
ANGULAR	DATE	10/22/93	DRAWING NUMBER	40683	REV A