

Combination Fluorometer and Turbidity Sensor

ECO FLNTU

User's Guide

The user's guide is an evolving document. If you find sections that are unclear, or missing information, please let us know. Please check our website periodically for updates.

WET Labs, Inc.
P.O. Box 518
Philomath, OR 97370
541-929-5650
fax: 541-929-5277
www.wetlabs.com

ECO Sensor Warranty

This unit is guaranteed against defects in materials and workmanship for one year from the original date of purchase. Warranty is void if the factory determines the unit was subjected to abuse or neglect beyond the normal wear and tear of field deployment, or in the event the pressure housing has been opened by the customer.

To return the instrument, contact WET Labs for a Return Merchandise Authorization (RMA) and ship in the original container. WET Labs is not responsible for damage to instruments during the return shipment to the factory. WET Labs will supply all replacement parts and labor and pay for return via 3rd day air shipping in honoring this warranty.

Shipping Requirements

1. Please retain the original ruggedized shipping case. It meets stringent shipping and insurance requirements, and protects your meter.
 2. Service and repair work cannot be guaranteed unless the meter is shipped in its original case.
 3. Clearly mark the RMA number on the outside of your case and on all packing lists.
 4. Return instruments using 3rd day air shipping or better: do **not** ship via ground.
-

Return Policy for Instruments with Anti-fouling Treatment

WET Labs cannot accept instruments for servicing or repair that are treated with anti-fouling compound(s). This includes but is not limited to tri-butyl tin (TBT), marine anti-fouling paint, abrasive coatings, etc.

Please ensure any anti-fouling treatment has been removed prior to returning instruments to WET Labs for service or repair.



Electrical equipment marked with this symbol may not be disposed of in European public disposal systems. In conformity with EU Directive 2002/96/EC (as amended by 2003/108/EC), European users of electrical equipment must return old or end-of-life equipment to the manufacturer for disposal at no charge to the user.

Table of Contents

1. Overview.....	1
1.1 Specifications.....	1
1.2 Connectors.....	2
1.3 Delivered Items.....	3
1.4 Optional Equipment	3
2. Theory of Operation	6
3. Instrument Operation.....	7
3.1 Initial Checkout.....	7
3.2 Operating the Sensor for Data Output.....	7
3.3 <i>Bio-wiper</i> [™] Operation	8
3.4 Deployment	8
3.5 Upkeep and Maintenance	9
4. FLNTUB: Using Internal Batteries	12
4.1 Removing End Flange and Batteries.....	12
4.2 Replacing End Flange and Batteries	13
4.3 Checking Vent Plug	14
5. Data Analysis.....	15
5.1 Scale Factor	15
5.2 Analog Response	15
5.3 Digital Response	16
6. Characterization and Testing	17
7. Terminal Communications	18
7.1 Interface Specifications	18
7.2 Command List	18
8. Device and Output Files.....	19
8.1 Plot Header	19
8.2 Column Count Specification	19
8.3 Column Description	19
8.4 Sample Device Files.....	20
8.5 Sample Output Files.....	20
Appendix A: Mounting Bracket Drawing	21

1. Overview

1.1 Specifications

Model	FLNTU(RT)/D	FLNTU	FLNTUB	FLNTUS	FLNTUSB
Mechanical					
<i>Diameter</i>	6.3 cm				
<i>Length</i>	12.7 cm		25.4 cm	13.3 cm	26.0 cm
<i>6000 m</i>	25.6 cm		--		
<i>Weight in air</i>	0.4 kg		0.96 kg	0.5 kg	0.96 kg
<i>6000 m</i>	1.3 kg		--	--	--
<i>Weight in water</i>	0.02 kg		0.14 kg	0.08 kg	0.14 kg
<i>6000 m</i>	0.75 kg		--		
<i>Material, std depth</i>	Acetal copolymer				
<i>6000 m</i>	Titanium		--		
Environmental					
<i>Temperature range</i>	0–30 deg C				
<i>Depth rating</i>	600 m		300 m		
<i>“deep” unit</i>	6000 m		--		
<i>Optional pressure sensor</i>	N	Y	Yes		
<i>Optional thermistor</i>	N	Y	Yes		
Electrical					
<i>Digital output resolution</i>	12 bit				
<i>Analog output signals</i>	0–5 V				
<i>Internal data logging</i>	N	Y	Y		
<i>Internal batteries</i>	N		Y	N	Y
<i>Connector</i>	Subconn MCBH6M				
<i>Input</i>	7–15 VDC				
<i>Current, typical</i>	60 mA				
<i>Current, sleep</i>	--	150 µA			
<i>Data memory</i>	--	90,000 samples			
<i>Sample rate</i>	to 8 Hz				
<i>RS-232 output</i>	19200 baud				
<i>Optional Anti-fouling Bio-wiper™</i>	N			Y	
<i>Bio-wiper™ cycle</i>	--			140 mA	
Optical (Turbidity)					
<i>Wavelength</i>	700 nm				
<i>Sensitivity (min)</i>	0.01 NTU				
<i>Range, typical</i>	0.01–25 NTU				
Optical (Fluorescence)					
<i>Wavelength excitation</i>	470 nm				
<i>Wavelength emission</i>	695 nm				
<i>Sensitivity (per count)</i>	0.025 µg/l				
<i>Range, typical</i>	0.01–50 µg/l				
<i>Linearity (both signals)</i>	99% R ²				

FLNTU(RT)—Provides analog or RS-232 serial output with 4,000-count range. This unit operates continuously when powered. Available with a 6,000 m depth rating.

FLNTU—Provides the capabilities of the FLNTU(RT) with periodic sampling. Available with a 6,000 m depth rating.

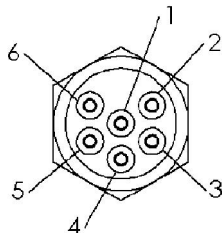
FLNTUS—Provides the capabilities of the FLNTU with an integrated anti-fouling *Bio-wiper*™ and copper faceplate.

FLNTUB—Provides the capabilities of the FLNTU with internal batteries for autonomous operation.

FLNTUSB—Provides the capabilities of the FLNTUS with internal batteries for autonomous operation.

1.2 Connectors

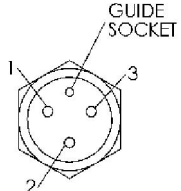
ECO-Series meters use a six-pin bulkhead connector (shown below).

Pin	Function	MCBH-6-MP
1	Ground	
2	RS-232 RX	
3	NTU analog out	
4	V in	
5	RS-232 TX	
6	FL analog out	

Input power of 7–15 VDC is applied to V in (pin 4). The power supply current returns through the common ground pin (pin 1). The input power signal has a bi-directional filter. This prevents external power supply noise from entering into *ECO*-FLNTU, and also prevents internally generated noise from coupling out on to the external power supply wire. Data is sent out the serial output pin.

1.2.1 *ECO* FLNTUB, FLNTUSB Connectors

FLNTUB and FLNTUSB (units with internal batteries) have a second bulkhead connector that comes with a jumper plug to supply power to the unit. The socket functions for this connector are shown below.

Socket	Function	
1	V in	
2	N/C	
3	Battery out	

FLNTUB and FLNTUSB (internal battery units) are supplied with a jumper plug that provides power from the internal batteries for autonomous operation.

1.3 Delivered Items

The standard ECO delivery consists of the following:

- the instrument itself
- dummy plug with lock collar
- protective cover for optics
- this user's guide
- ECOView user's guide
- ECOView host program and device files (on CD)
- instrument-specific calibration sheet
- Non-battery units only: stainless steel mounting bracket and hardware (See Appendix A for details)
- Internal battery units: six 9-V Lithium batteries (installed)

Spare Parts (equipment-dependent)

- Fluorescent stick for bench testing
- *Bio-wiper*™ units: one 3/32-in. hex key for *Bio-wiper*™ removal
- *Bio-wiper*™ units: Three 4-40 x 3/8 in. 316 stainless steel screws for securing *Bio-wiper*™
- Internal battery units:
 - Two end flange O-rings (size 224) and two vent plug O-rings (size 010)
 - Two jacking screws for connector flange removal
 - One 3/32-in. hex key for jacking screws
 - Power plug for autonomous operation
 - Three pre-cut segments (7 inches) of 0.036-inch diameter monofilament for end flange
 - Three pre-cut segments (0.25 inches) of 0.094-inch diameter white nylon bar stock for replacing the white plastic dowel pin.

1.4 Optional Equipment

1.4.1 Test Cable

A test cable is optionally available with each unit. This cable includes:

1. An inline connector for providing power to the instrument from a user-supplied 9V battery.
2. An auxiliary analog out connector.
3. A second auxiliary analog out connector for NTU only.
4. A DB-9 serial interface connector.
5. A six-socket connector for providing power and signal to the instrument.

1.4.2 Copper Faceplate

ECO meters are optionally equipped with copper faceplates to improve the meter's resistance to biofouling. Refer to Section 3.5.1 for important details on maintenance and cleaning.

1.4.3 Bio-wiper™ and Copper Faceplate

The FLNTUS and FLNTUSB are equipped with an integrated non-contact anti-fouling *Bio-wiper*™ and copper faceplate for use in extended deployments. This wiper can be manually controlled by a host controller package, or can perform autonomously as part of

a pre-programmed sampling sequence upon instrument power-up. The rate of closure and opening is dependent upon both temperature and depth.

Refer to Section 3.5.1 for important details on the maintenance and cleaning of the *Bio-wiper*™ and copper faceplate.

WARNING!

Do **NOT** rotate the *Bio-wiper*™ manually. This can damage the wiper motor and will void the warranty.

1.4.4 Batteries

ECO units with internal batteries are supplied with six 9-volt Lithium batteries as their power source. They can use either standard alkaline cells for a total capacity of approximately 1000 mA-hrs, or for longer deployments, LiMnO₂ cells to achieve more than 2000 mA-hrs of operational capacity. Actual total usage time of the internal batteries is a function of several parameters. These include nominal water temperature, sequence timing, sample periods, and total deployment duration.

WARNING!

Be sure to keep the dummy plug on the FLNTUB and FLNTUSB when not in use.

For even greater deployment capability contact WET Labs for information on external battery packs.

1.5.5 External Thermistor

ECO meters are optionally equipped with an external thermistor. The thermistor is calibrated at WET Labs and the calibration coefficients are supplied on the instrument's calibration sheets. Thermistor output is in counts and can be converted into engineering units using the instrument's device file and ECOView software or the raw data can be converted in the user's software (e.g. MATLAB or Excel) using the calibration equation:

$$\text{Temperature (deg C)} = (\text{Output} * \text{Slope}) + \text{Intercept}$$

1.5.6 Pressure Sensor

ECO meters are optionally equipped with a strain gauge pressure sensor. The pressure sensor is calibrated at WET Labs and the calibration coefficients are supplied on the instrument's calibration sheets. Pressure sensor output is in counts and can be converted into engineering units using the instruments device file and ECOView software or the raw data can be converted in the user's software (e.g. MATLAB or Excel) using the calibration equation:

$$\text{Relative Pressure (dbar)} = (\text{Output} * \text{Slope}) + \text{Intercept}$$

Please note that strain gauge pressure sensors are susceptible to atmospheric pressure changes and should be "zeroed" on each deployment or profile. The calibration equation for pressure above should be used first to get the relative pressure and the cast offset should then be subtracted to get the absolute pressure:

Absolute Pressure (dbar) = Relative Pressure (dbar) - Relative Pressure at Atmospheric/Water interface (dbar)

WARNING!

Do not exceed the pressure sensor's depth rating (see calibration sheet).

Pressure Sensor Maintenance

A plastic fitting filled with silicone oil provides a buffer between the pressure transducer and seawater. The transducer is both sensitive and delicate. Following the procedures below will ensure the best results and longest life from your pressure sensor.

Pressure is transmitted from the water to the stainless steel transducer diaphragm via a plastic fitting filled with silicone oil. The inert silicone oil protects the pressure sensor from corrosion, which would occur after long exposure to salt water. The fitting will generally prevent the oil from escaping from the reservoir into the water. However, you may occasionally wish to ensure that oil remains in the reservoir on top of the transducer.

WARNING!

Never touch or push on the transducer.

1. Thoroughly clean the top of the instrument.
2. Completely remove the white nylon Swagelock fitting using a 9/16-in. wrench.
3. Check for obstructions in the tiny hole. Blow clear with compressed air or use a small piece of wire.
4. Wipe clean the o-ring at the base of the Swagelock fitting.
5. Screw the Swagelock fitting into the end flange until finger tight.
6. Tighten it an additional 1/8 turn using a wrench only if necessary.
7. Wipe up any excess oil.

2. Theory of Operation

The *Environmental Characterization Optics (ECO)* combination fluorometer and turbidity sensor allows the user to measure chlorophyll fluorescence at 470 nm and turbidity at 700 nm within the same volume.

The fluorometer allows the user to measure relative chlorophyll, CDOM, uranine, phycocyanin, or phycoerythrin concentrations by directly measuring the amount of fluorescence emission in a sample volume of water. The *ECO* uses an LED to provide the excitation source. An interference filter is used to reject the small amount of out-of-band light emitted by the LED. The light from the source enters the water volume at an angle of approximately 55–60 degrees with respect to the end face of the unit. Fluoresced light is received by a detector positioned where the acceptance angle forms a 140-degree intersection with the source beam. An interference filter is used to discriminate against the scattered excitation light.

Turbidity is measured simultaneously by detecting the scattered light from a 700 nm LED at 140 degrees to the same detector used for fluorescence. The turbidity measurement is performed at the same 140 degree angle as the chlorophyll fluorescence.

3. Instrument Operation

Please note that certain aspects of instrument operation are configuration-dependent. These are noted where applicable within the manual.

3.1 Initial Checkout

Supplied from the factory, *ECO*s are configured to begin continuously sampling upon power-on. Electrical checkout of *ECO* is straightforward using the optional test cable.

Connect the 6-socket connector on the test cable to the instrument to provide power to the LEDs and electronics (see Section 1 for a diagram of the pin-outs of *ECO*-FLNTU). Connect the battery leads on the test cable to the 9V battery supplied with the meter. Light should emanate from the meter.

3.1.1 Analog Option

Connect a digital multimeter (DMM) to the auxiliary leg of the test cable: the center of the RCA connector provides analog out signal and the outside provides ground. Auxiliary “chl” is the fluorometer output. Auxiliary “NTU” is the NTU output. With the sensor face clean and dry the instrument should read approximately 0.050–0.095 VDC. The analog signal will saturate at approximately 5 volts.

3.2 Operating the Sensor for Data Output

Note

ECO scattering meters are sensitive to AC light. Before making measurement, turn AC lighting off.

1. Connect the 6-socket connector to the instrument to provide power to the LEDs and electronics. Connect the DB-9 connector to a computer with the ECOView host program installed on it.

WARNING!

Always use a regulated power supply to provide power to *ECO* sensors if not using the 9V battery provided with the test cable: power spikes may damage the meter.

2. Start ECOView. Select the appropriate COM Port and Device File. Supply power to the meter, then select the **Start Data** button. Output will appear in the **Raw Data** window. Test the instrument’s signal using the fluorescent stick. *ECO* is sensitive to room lighting; for best results, perform test in ambient light only (turn off AC lighting). Remove the protective cover. Hold the fluorescent stick 1–4 cm above the optical paths in an orientation that maximizes exposure of the stick. (Parallel with the beams, not intersecting them). The signal will increase toward saturation (maximum value on characterization sheet). When applying power to sensors with a *Bio-wiper*[™], it will open and, depending on the settings, operate until you select **Stop Data** in ECOView (or input !!!!! in a terminal program) The *Bio-wiper*[™] will close and the instrument will await the next command.

3. If the sensor completes the requested samples (this is common for meters set up in moored applications), it will go into sleep mode, and the meter will not light when power is cycled. To “wake” the meter, click **Stop Data** five times at the rate of two times per second immediately upon applying power. This interrupts the sensor, returning it to a “ready” state, awaiting commands.
4. Check the settings for the ECO and change if necessary. ECOView factory settings for continuous operation:
 - Set Number of Samples = 0
 - Set Number of Cycles = 0
 - Internal Memory=On
5. If the meter does not light after performing step 3, check the battery. Replace if necessary, perform steps 2 and 3 to verify communication. If it still does not light, contact WET Labs.

Refer to the ECOView User’s Guide for details about using the software.

3.3 **Bio-wiper[™] Operation**

Caution

Do NOT manually rotate the *Bio-wiper[™]*. This will void the warranty.

The *ECO-FLNTUS* and *-FLNTUSB* are provided with an anti-fouling *Bio-wiper[™]* and faceplate that extend the possible deployment duration by retarding biological growth on the instrument’s optical surface. The *Bio-wiper[™]* covers the optical surface: 1) while the instrument is in “sleep” mode; 2) when it has completed the number of samples requested; and 3) when the user selects **Stop Data** in ECOView or types “!!!!” in a terminal program. When the meter wakes up, the optical surface is exposed by the *Bio-wiper’s[™]* counter-clockwise rotation.

If power is shut off in mid cycle, the *Bio-wiper[™]* will reinitialize to the beginning of the user-selected settings when power is applied again.

3.4 **Deployment**

WARNING!

Battery-equipped units:

Always check vent seal plug for full insertion immediately prior to deployment.

Caution

The FLNTU should be mounted so the LED source will not “see” any part of a cage or deployment hardware. This will compromise the sensor’s output.

Once power is supplied to the *ECO* meter, the unit is ready for submersion and subsequent measurements. Some consideration should be given to the package orientation. Do not face the sensor directly into the sun or other bright lights. For best output signal integrity, locate the instrument away from significant EMI sources.

Other than these basic considerations, one only needs to make sure that the unit is securely mounted to whatever lowering frame is used and that the mounting brackets are not damaging the unit casing.

3.5 Upkeep and Maintenance

We highly recommend that *ECO* meters be returned to the factory annually for cleaning, calibration and standard maintenance. Contact WET Labs or visit our website for details on returning meters and shipping.

After each cast or exposure of the instrument to natural water, flush with clean fresh water, paying careful attention to the sensor face. Use soapy water to cut any grease or oil accumulation. Gently wipe clean with a soft cloth. The sensor face is composed of ABS plastic and optical epoxy and can easily be damaged or scratched.

WARNING!

Do not use acetone or other solvents to clean the sensor.

3.5.1 *Bio-wiper*™ and Faceplate Cleaning and Maintenance

The *Bio-wiper*™ and the copper faceplate need to be removed from the meter for thorough cleaning to maximize anti-fouling capability.

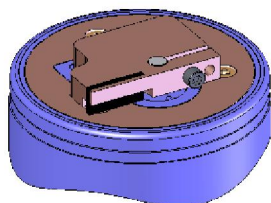
1. Be sure the meter is **NOT** powered or connected to a power source prior to uninstalling the *Bio-wiper*™ and faceplate.

WARNING!

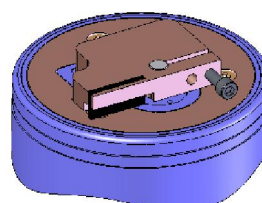
Manually turning the motor shaft can damage the wiper motor and will void the warranty.

Make sure the *Bio-wiper*™ is loosened from the shaft before attempting to rotate the *Bio-wiper*™.

2. Remove *Bio-wiper*™: Use the factory-supplied 3/32-in. hex key to loosen the screw that secures the wiper to the shaft on the instrument. It may be necessary to remove the screw from the clamping hole and screw it into the releasing hole, tightening it just enough to free the *Bio-wiper*™ from the shaft.



clamping screw hole



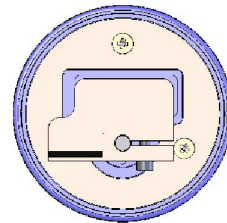
releasing screw hole

3. Remove faceplate: Use a small Phillips screwdriver to remove the screws that attach the plate to the optics head.

WARNING!

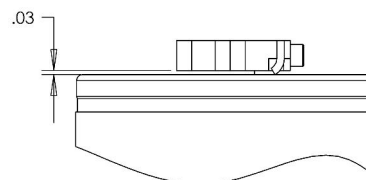
Be sure to retain and re-use the factory-installed screws as they are vented for pressure compensation.

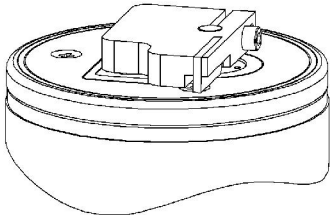
4. Wash *Bio-wiper*[™] and/or copper faceplate with soapy water. Rinse and dry thoroughly. Note the condition of the copper on the instrument side of the wiper. It is normal for copper to corrode and turn green, especially after the instrument has been removed from the water. This corrosion will slightly reduce the shutter's anti-fouling ability the next time it is deployed.
5. Buff each with a pad of green Scotch Brite[®] (or similar) until shiny.
6. Clean the *Bio-wiper*[™] shaft and the shaft hole using an isopropyl alcohol-saturated cotton swab. Allow to dry.
7. Re-install faceplate.
8. Check the screw used to secure the *Bio-wiper*[™] to the shaft: a hex key must fit snugly into the screw socket. If the socket is in any way compromised, use a new screw (4-40 x 3/8 in. 316 stainless steel treated with anti-seize. These are shipped as part of the meter's spare parts kit.)
9. Slide the *Bio-wiper*[™] over the shaft. Be careful not to twist it on, thus rotating the shaft. If the wiper does not slide on easily, insert the screw into the expander hole, turning slowly until the *Bio-wiper*[™] slides easily onto the shaft.
10. Rotate the *Bio-wiper*[™] into the closed position.



11. Set the gap between the *Bio-wiper*[™] and the instrument face to 0.03 in. (0.8 mm). An improperly set gap will either fail to clean the face or cause the motor to draw excessive current.

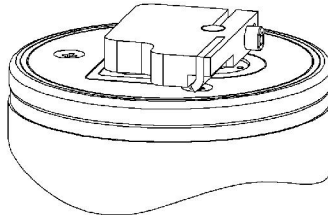
To gauge 0.03 in., fold a piece of paper in half, then in half again, then fold a third time, creasing the edges. It's now 8 sheets and about 0.03 in. thick.





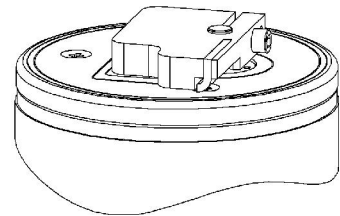
Not enough flex.

Wiper may not be effective.



Proper flex.

Wiper maintains contact with instrument face and optical window.



Too much flex.

Wiper may cause too much friction, using excessive power.

12. Use the 3/32-in. hex key to tighten the screw to “finger-tight,” then snug an additional quarter-turn.
13. Run the instrument to verify operation. The *Bio-wiper*™ must rotate 180 degrees to clear the optics before sampling, and 180 degrees to cover the optics after sampling.
14. If the wiper needs adjusting, loosen the screw, make any necessary adjustments, and repeat steps 9 through 13 to ensure the wiper is performing properly.

4. FLNTUB: Using Internal Batteries

ECO sensors powered with internal batteries can either run directly from the internal batteries or can operate from power supplied by an external DC power supply (7–15 volts). Internal-to-external source conversion is facilitated by a jumper plug that plugs into the unit’s bulkhead connector. When inserted, the plug forms a connection from the battery to the electronics power supply. By removing the plug, the instrument can be powered and communicate via a test or deployment cable. Setup conditions, instrument checkout, real-time operation, and data downloading are thus all achieved identically to the methods prescribed for the FLNTU and FLNTUS units.

4.1 Removing End Flange and Batteries

WARNING!

Changing the batteries will require opening the pressure housing of the *ECO* sensor. Only people qualified to service underwater oceanographic instrumentation should perform this procedure. If this procedure is performed improperly, it could result in catastrophic instrument failure due to flooding or in personal injury or death due to abnormal internal pressure as a result of flooding.

WET Labs Inc. disclaims all product liability from the use or servicing of this equipment. WET Labs Inc. has no way of controlling the use of this equipment or of choosing qualified personnel to operate it, and therefore cannot take steps to comply with laws pertaining to product liability, including laws that impose a duty to warn the user of any dangers involved with the operation and maintenance of this equipment. Therefore, acceptance of this equipment by the customer shall be conclusively deemed to include a covenant by the customer to defend and hold WET Labs Inc. harmless from all product liability claims arising from the use and servicing of this equipment. Flooded instruments will be covered by WET Labs Inc. warranties at the discretion of WET Labs, Inc.

1. Make sure the instrument is thoroughly dry.
2. Remove the dummy plugs.
3. With connector end flange pointed downwards away from face, release seal from vent plug.
4. Remove moisture from vent plug area.
5. Using needle nose pliers, remove filament from end flange.
6. Lift flange from pressure housing until seal is broken. The jacking screws can be used to “push” the flange from the pressure housing and then can be removed or left in the end flange.

7. Remove any excess moisture from flange–can seal area.
8. Work end flange out of pressure housing and remove any residual moisture. Remove the gray foam spacer and the neoprene insulator.
9. The battery pack is connected to the processor boards by a six-pin Molex connector: do NOT pull too hard or far on the battery pack or it will come unplugged and the unit will need to be returned to WET Labs.
10. Gently pull the white cord at the loop to remove the battery pack from the pressure housing.
11. Remove the black plastic protectors from the ends of the long screws securing the batteries.
12. Loosen and remove the screws (3/16-in slotted driver).

4.2 Replacing End Flange and Batteries

1. Replace the batteries.
2. Re-install the screws:
 - Align the groove in each of the plates so the six-wire extension bundle will fit in it along its length.
 - Be careful not to cross-thread into the bottom end plate nor to over-tighten the screws.
 - If they are too tight, the fiber washers that act as separators between the batteries will flex.
 - Make sure there are equal amounts of screw threads protruding from the bottom end plate when they are secure. This will ensure the pack is straight and will fit into the pressure housing with no difficulty.
3. Re-install the black plastic protective covers on the ends of the screws.
4. Remove and check the pressure housing O-ring for nicks or tears. Replace if necessary. Before re-installing, apply a light coat of vacuum grease on the O-ring.
5. Carefully replace the battery pack in the pressure housing. Place the neoprene insulator on the battery assembly and lay the white cord on the top.
6. Plug in the three-pin, then the six-pin Molex connectors. Sensor operation can now be tested if desired.
7. Align the hole in the end flange (NOT the jack screw holes) with the white dowel pin. While coiling the six wire bundle and making sure none are pinched between the end flange and the pressure housing, position the flange on the housing. Leave

space to re-insert the gray foam spacer, making sure the cut-out accommodates the vent plug screw.

8. Push the end flange all the way on to the pressure housing, making sure no wires are pinched. Be sure the vent plug does not pop up. If it does, you'll need to re-position the foam spacer.
9. Re-insert the monofilament.

4.3 Checking Vent Plug

If there is fouling on the vent plug, it should be cleaned and the two 010 O-rings replaced. Otherwise, this mechanism should be maintenance-free.

WARNING!

The pressure housing is made of plastic material that scratches easily. Do not let the screwdriver slip and scratch the can when removing or replacing the vent plug. Use a toothpick (something softer than the plastic) to remove the O-rings from the vent plug.

1. Pull vent plug out about half way; hold plug while unscrewing the truss screw. When screw is removed, pull vent plug from end flange.
2. "Pinch" bottom O-ring around vent plug to form a small gap you can work a toothpick into. Use the toothpick to help roll the bottom O-ring off the plug.
3. Perform the same procedure with the top O-ring.
4. Clean the vent plug and vent plug hole using a dry lint-free tissue or cotton swab.
5. Lightly coat two undamaged or new O-rings with silicon grease. Install the top O-ring (nearest to large end of plug) first, then the bottom one.
6. Insert vent plug into its hole in the end flange and hold it while inserting the truss screw. Rotate the vent plug to begin tightening the screw. Finish tightening using a screwdriver, being careful not to over-tighten truss screw.

Note

A portion of the truss screw head has been removed to allow for venting in case of pressure buildup.

5. Data Analysis

Data from the *ECO* fluorometer and turbidity sensor, whether digital or analog, represents raw output from the sensor. Applying linear scaling constants, this data can be expressed in meaningful forms of chlorophyll fluorescence and NTUs.

5.1 Scale Factor

The scale factor is factory-calculated by obtaining a consistent output of a solution with a known concentration, then subtracting the meter's dark counts. The scale factor, dark counts, and other characterization values are given on the instrument's characterization sheet.

Chlorophyll

For chlorophyll, WET Labs uses the chlorophyll equivalent concentration (CEC) as the signal output using a fluorescent proxy approximately equal to 25 µg/l of a *Thalassiosira weissflogii* phytoplankton culture.

Scale Factor = 25 µg/l ÷ (Chl Equivalent Concentration – dark counts)

For example: 25 ÷ (3198 – 71) = 0.0080.

NTU

Scale Factor = xx ÷ (meter output – dark counts), where xx is the value of a Formazin concentration.

For example: 12.2 ÷ (2011 – 50) = 0.0062.

The scale factor is then applied to the output signal to provide the direct conversion of the output signal to chlorophyll concentration. WET Labs supplies a scale factor on the instrument-specific calibration sheet that ships with each meter. While this constant can be used to obtain approximate values, field calibration is highly recommended.

5.2 Analog Response

The *ECO*-FLNTU response is linear over the measurement range provided. Because of the varied environments in which each user will work, it is important to do calibrations using similar seawater as you expect to encounter *in situ*. Refer to the characterization section for further details. This will provide an accurate blank, equivalent phytoplankton types and similar physiological conditions for calculating the scale factor, thereby providing an accurate and meaningful calibration. Once a zero point has been determined and a scale factor established, the conversion of DC volts to chlorophyll concentration and NTUs is straightforward using the equations:

Chlorophyll:

$$[\text{Chl}]_{\text{sample}} = (V_{\text{output}} - V_{\text{dc}}) * \text{Scale Factor}$$

where

$[\text{Chl}]_{\text{sample}}$ = concentration of a chlorophyll sample of interest ($\mu\text{g/l}$)

V_{output} = output when measuring a sample of interest (VDC)

V_{dc} = dark counts, the measured signal output (in VDC) of meter in clean water with black tape over the detector

Scale factor = multiplier in $\mu\text{g/l/volts}$

NTU:

$$[\text{NTU}]_{\text{sample}} = (V_{\text{output}} - V_{\text{dc}}) * \text{Scale Factor}$$

where

$[\text{NTU}]_{\text{sample}}$ = level of turbidity (NTU)

V_{output} = output when measuring a sample of interest (VDC)

V_{dc} = dark counts, the measured signal output (in VDC) of meter in clean water with black tape over the detector

Scale factor = multiplier in NTU/volts

5.3 Digital Response

Digital data is processed in a similar fashion to analog data. Scaling is linear, and obtaining a “calibrated” output simply involves subtracting a digital offset value from output when measuring a sample of interest and multiplying the difference by the instrument scaling factor.

Chlorophyll:

$$[\text{Chl}]_{\text{sample}} = (C_{\text{output}} - C_{\text{dc}}) * \text{Scale Factor}$$

where

$[\text{Chl}]_{\text{sample}}$ = concentration of a chlorophyll sample of interest ($\mu\text{g/l}$)

C_{output} = output when measuring a sample of interest (counts)

C_{dc} = dark counts, the measured signal output of meter in clean water with black tape over the detector

Scale factor = multiplier in $\mu\text{g/l/counts}$.

NTU:

$$[\text{NTU}]_{\text{sample}} = (\text{NTU}_{\text{output}} - C_{\text{dc}}) * \text{Scale Factor}$$

where

$[\text{NTU}]_{\text{sample}}$ = concentration of NTU solution

$\text{NTU}_{\text{output}}$ = output when measuring a sample of interest (counts)

C_{dc} = dark counts, the measured signal output of meter in clean water with black tape over the detector

Scale factor = multiplier in NTU/counts.

6. Characterization and Testing

ECO FLNTU is configured for measurement ranges given in Section 1.1 Gain selection is performed by setting several gain settings inside the instrument, and running a dilution series to determine the zero voltage offset and to ensure that the dynamic range covers the measurement range of interest. The dilution series also establishes the linearity of the instrument's response. As is the case with other fluorometers, a detailed characterization must be done by the user to determine the actual zero point and scale factor for his/her particular use.

The tests below ensure the meter's performance.

1. **Dark counts:** The meter's baseline reading in the absence of source light is the dark count value. This is determined by measuring the signal output of the meter in clean, de-ionized water with black tape over the detector.
2. **Pressure:** To ensure the integrity of the housing and seals, *ECOs* are subjected to a wet hyperbaric test before final testing. The testing chamber applies a water pressure of at least 50 PSI.
3. **Mechanical Stability:** Before final testing, the *ECO* meters are subjected to a mechanical stability test. This involves subjecting the unit to mild vibration and shock. Proper instrument functionality is verified afterwards.
4. **Electronic Stability:** This value is computed by collecting a sample once every second for twelve hours or more. After the data is collected, the standard deviation of this set is calculated and divided by the number of hours the test ran. The stability value must be less than 2.0 counts/hour.
5. **Noise:** Noise is computed from a standard deviation over 60 samples. These samples are collected at one-second intervals for one minute. A standard deviation is then performed on the 60 samples, and the result is the published noise on the calibration form. The calculated noise must be below 2 counts.
6. **Voltage and Current Range Verification:** To verify the *ECO* operates over the entire specified voltage range (7–15 V), a voltage test is performed at 7 and 15V, and the current draw and operation is observed. The current must remain constant at both 7 and 15V.

7. Terminal Communications

As an alternative to the ECOView host software, *ECO* sensors can be controlled from a terminal emulator or customer-supplied interface software. This section outlines hardware requirements and low-level interface commands for this type of operation.

7.1 Interface Specifications

- baud rate: 19200
- data bits: 8
- parity: none
- stop bits: 1
- flow control: none

7.2 Command List

Command	Parameters passed	Description
!!!!	none	Stops data collection; allows user to input setup parameters. Note that if the meter is in a sleep state, the power must be turned off for a minute, then powered on while the “!” key is held down for several seconds. If this does not “wake” the meter, refer to the ECOView user’s guide Operation Tip to “wake” a meter in a low power sleep state to enable inputting setup parameters.
\$ave	single number, 1 to 65535	Number of measurements for each reported value
\$clk	24hr format time, hhmmss	Sets the time in the Real Time Clock
\$dat	date, format ddmmyy	Sets the date in the Real Time Clock
\$emc	none	Erases the Atmel memory chip, displays menu when done
\$get	none	Reads data out of Atmel memory chip. Prints "etx" when completed.
\$int	24hr format time, hhmmss	Time interval between packets in a set
\$mnu	none	Prints the menu, including time and date
\$pkt	single number, 0 to 65535	Number of individual measurements in each packet
\$rec	1 (on) or 0 (off)	Enables or disables recording data to Atmel memory chip
\$rls	none	Reloads settings from flash
\$run	none	Executes the current settings
\$set	single number, 0 to 65535	Number of packets in a set
\$sto	none	Stores current settings to internal flash

8. Device and Output Files

Each meter is shipped with a CD containing the meter-specific device file, a sample output file, characterization information, and the applicable user's guides.

The ECOView host program requires a device file to provide engineering unit outputs for any of its measurements. Except for the first line in the device file, all lines of information in the device file that do not conform to one of the descriptor headers will be ignored. Every ECOView device file has three required elements: Plot Header, Column Count Specification, and Column Description.

8.1 Plot Header

The first line in the device file is used as the plot header for the ECOView plots.

8.2 Column Count Specification

The Column Count Specification identifies how many columns of data to expect. It follows the format "Column=n." The Column Count Specification must be present before any of the Column Descriptions are listed.

8.3 Column Description

Every column in the ECO meter's output must have a corresponding Column Description in the device file. The following notation is used in identifying the elements of each Column Description.

x = the column number, starting with 1 as the 1st column

sc = scale

dc = dark counts: meter output in clean water with optics head taped

mw = wavelength measured by the sensor

dw = display wavelength: color to plot scattering data in

v = measured volts dc

Valid Column Descriptions are listed in the subsections below.

8.3.1 Fluorescence Measurements

CHL=	x	sc	dc
IENGR=	x	sc	dc
PHYCOERYTHRIN=x		sc	dc
URANINE=	x	sc	dc
RHODAMINE=	x	sc	dc
CDOM=	x	sc	dc

8.3.2 Turbidity Measurements

NTU=	x	sc	dc
------	---	----	----

8.3.3 Miscellaneous

Date=	x	MMDD/YY
Time=	x	HH:MM:SS
N/U=	x	Not Used



Scale, offset, and output are factory-set engineering unit calculations the user can manually adjust. Engineering units are displayed through ECOView in the Plot Data tab. Parameters for changing the internally calculated engineering units:

```
iengrscale=sc
iengroffset=off
iengrunits=label      where label is any continuous character string.
```

8.4 Sample Device Files

Below are sample device files for ECO FLNTU meters.

8.4.1 Firmware Version 3.01 and Higher

```
ECO FLNTUS-785
Created on: 08/03/07
COLUMNS= 7
DATE= 1
TIME= 2
N/U= 3
CHL= 4      0.0128      62.0
N/U= 5
NTU= 6      0.0063      85.0
N/U= 7
```

8.4.2 Firmware Versions Prior to 3.01

```
ECO FLNTUS-045
Created on: 07/03/03
COLUMNS= 7
DATE= 1
TIME= 2
REF= 3
CHL= 4      0.0128      62.0
REF= 5
NTU= 6      0.0063      85.0
N/U= 7
```

8.5 Sample Output Files

The reference column is unused by both firmware versions, but in 3.01 the emission wavelength of the chlorophyll signal and the scattering wavelength are displayed.

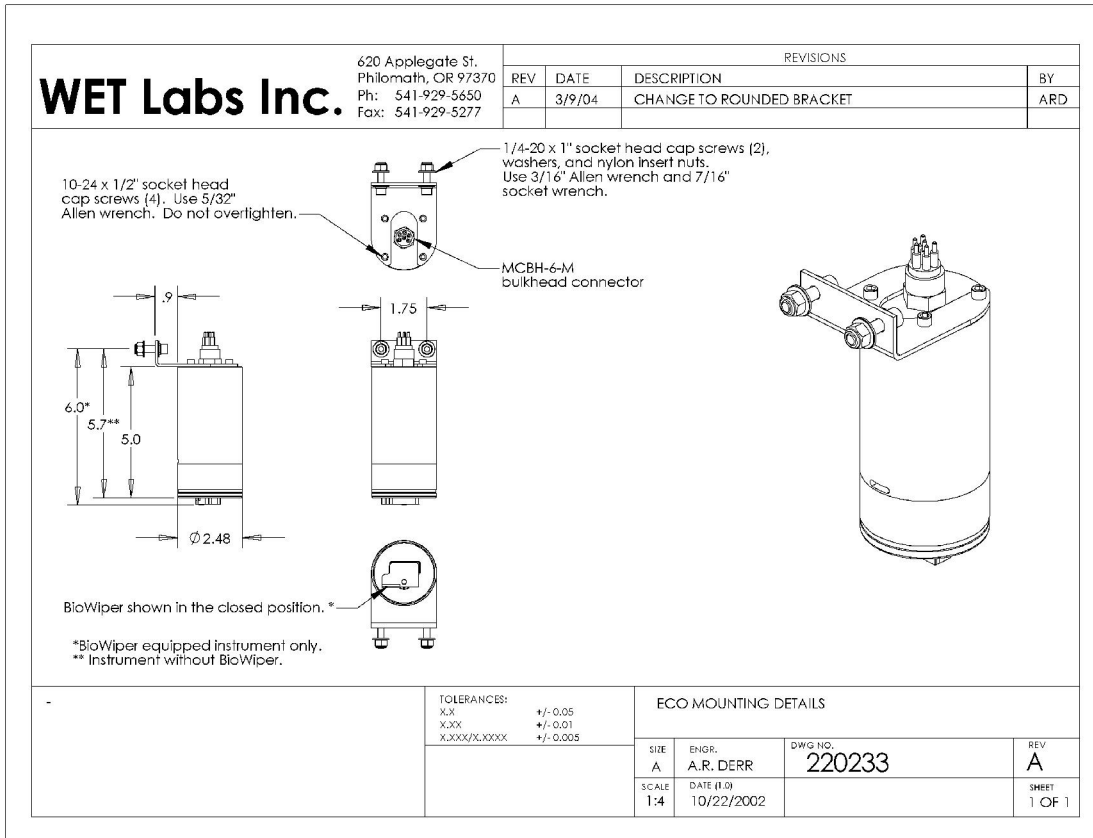
8.5.1 Firmware Versions 3.01 and Higher

Date (MM/DD/YY)	Time (HH:MM:SS)	λ	CHL Signal	λ	NTU Signal	Thermistor
08/03/07	11:22:51	695	49	700	69	536
08/03/07	11:22:53	695	48	700	68	536
08/03/07	11:22:54	695	49	700	68	536
08/03/07	11:22:56	695	49	700	67	536
08/03/07	11:22:58	695	47	700	69	536
08/03/07	11:23:00	695	48	700	68	536

8.5.2 Firmware Versions Prior to 3.01

Date (MM/DD/YY)	Time (HH:MM:SS)	Chl Ref	Chl Signal	NTU Ref	NTU Signal	Thermistor
05/01/03	10:06:51	1817	49	1583	69	536
05/01/03	10:06:53	1818	48	1583	68	536
05/01/03	10:06:54	1818	49	1583	68	536
05/01/03	10:06:56	1818	49	1584	67	536
05/01/03	10:06:58	1819	47	1584	69	536
05/01/03	10:07:00	1819	48	1583	68	536

Appendix A: Mounting Bracket Drawing





WET Labs WEEE Policy

In accordance with Directive 2002/96/EC and the Council of 27 January 2003, WET Labs policy regarding the collection and management of Waste Electrical and Electronic Equipment (WEEE) is published here and is available at www.wetlabs.com.

A core component of our corporate vision is to accept responsibility for preserving our environment and we embrace the opportunity to work with our customers and the EU to reduce the environmental impact resulting from the continuous improvement of our products.

WEEE Return Process

To meet the requirements of the WEEE Directive, WET Labs has instituted a product end-of-life take back program. To arrange return for an end-of-life WEEE product:

1. Contact WET Labs Customer Service
 - By phone: 1-541-929-5650
 - By email: support@wetlabs.com

WET Labs will provide:

- WEEE RMA number
- Shipping account number, method, and address

2. Package and ship the WEEE back to WET Labs

WEEE will be processed in accordance with WET Labs' equipment end-of-life recycling plan.

Revision History

Revision	Date	Revision Description	Originator
A	7/24/03	New document (DCR 322)	H. Van Zee
B	9/22/03	Correct syntax in 8.3.2 (DCR 336)	H. Van Zee
C	10/2/03	Add Terminal Communications section (DCR 337)	H. Van Zee
D	11/24/03	Modify explanation for stop data collection command (DCR 342)	W. Strubhar
E	11/25/03	Update specifications (DCR 338)	I. Walsh
F	2/17/04	Update bio-wiper maintenance and column description for device files (DCR 367)	A. Derr, I. Walsh
G	3/10/04	Add new test cable description, operational description, mounting diagram (DCR 381)	A. Derr, D. Whiteman
H	5/10/04	Delete warning about pins 3 and 6 (DCR 390)	I. Walsh
I	6/29/04	Update specifications (DCR 400)	I. Walsh
J	9/28/04	Add text for optional thermistor and pressure sensor (DCR 429)	I. Walsh
K	10/14/04	Add references to Lithium batteries for applicable models (DCR 433)	I. Walsh
L	7/26/05	Remove reference to Clean Water Offset, replace with Dark Counts	M. Johnson
M	12/7/05	Clarify Section 6 (DCR 477)	H. Van Zee, R. Watte, C. Wetzel
N	1/13/06	Clarify warranty statement (DCR 481)	A. Gellatly, S. Proctor
O	1/23/06	Add "deep" specs (DCR 483)	D. Hankins, H. Van Zee
P	3/3/06	Add copper faceplate (DCR 490, ECN 217)	H. Van Zee, I. Walsh
Q	5/31/06	Correct reference to cleaning section, add annual maintenance recommendation (DCR 498)	S. Proctor
R	6/28/06	Cleaning and maintenance of modified bio-wiper (ECN 230, DCR 502)	A. Derr, H. Van Zee
S	7/27/06	Change length of securing screw on bio-wiper (ECN # not assigned; DCR 504)	J. da Cunha, H. Van Zee
T	9/28/06	Update optical and electrical specifications (DCR 507)	M. Johnson
U	11/1/06	Correct Pressure Sensor and Thermistor output equations (DCR 509)	M. Johnson
V	8/28/07	Change unused Reference column in output to "N/U." Correct battery units to 300 m depth rating. Remove reference to refilling silicone oil in pressure sensors (ECN 251, DCR 513)	M. Johnson, H. Van Zee
W	9/11/07	Use one instead of two LEDs, (ECN 264) delete reference to refilling pressure sensor, update shipping requirements (DCR 531)	M. Johnson, H. Van Zee
X	7/10/08	Change dark counts derivation to reflect current production methodology (DCR 600)	A. Barnard, M. Johnson, H. Van Zee
Y	11/12/08	Update specs, correct Molex connector information (DCR 621)	S. Lohse
Z	5/13/09	Correct electronic stability test parameters (DCR 669)	M. Johnson
AA	12/23/09	Misc. corrections to text (DCR 689)	H. Van Zee
AB	9/21/10	Update sensitivity, current draw (DCR 695)	I. Walsh
AC	3/7/11	Correct chlorophyll sensitivity to 0.025 µg/l (DCR 751)	J. Rodriguez
AD	9/14/11	Add WEEE Statement (DCN 775)	H. Van Zee

