



Getting Started



WAVELAB LE7

Audio Editing And Mastering Software



Getting Started texts by Martin Ley.

Revision and quality control: Cristina Bachmann, Heiko Bischoff, Marion Bröer, Sabine Pfeifer, Heike Schilling.

Release date: January 14, 2010

The information in this document is subject to change without notice and does not represent a commitment on the part of Steinberg Media Technologies GmbH. The software described by this document is subject to a License Agreement and may not be copied to other media except as specifically allowed in the License Agreement. No part of this publication may be copied, reproduced or otherwise transmitted or recorded, for any purpose, without prior written permission by Steinberg Media Technologies GmbH.

All product and company names are ™ or ® trademarks of their respective owners.

Windows XP, Windows Vista and Windows 7 are trademarks of Microsoft Corporation.

Macintosh, Mac OS and iTunes are registered trademarks of Apple Inc.

© Steinberg Media Technologies GmbH, 2010.

All rights reserved.

Table of contents

5	Introduction
6	Welcome!
6	About the program versions
6	Conventions
8	About the Help system
8	How you can reach us
9	Installation and setup
10	Minimum requirements
10	Copy protection
11	Install WaveLab LE
11	Register your software
11	Set up the application preferences
12	Quick tour
13	Introduction
13	WaveLab LE user interface (GUI)
14	Master Section
15	Editing
16	Audio Montage
17	Podcast

1

Introduction

Welcome!

Thank you for your interest in WaveLab LE.

This OEM version is an entry-level product which includes a range of functions that help you to enter the world of professional audio editing. WaveLab LE not only allows you to edit CD-quality audio material on two tracks, but also enhances your recordings with more than ten plug-ins, including several effects taken from our professional music software, Cubase. In addition, there is the integrated Podcast function which allows you to share music and voice recordings in the internet.

Alongside this OEM version, there are also the full versions WaveLab Essential 7 and WaveLab 7, which provide further capabilities.

Please visit www.steinberg.net for more information on how to work with the WaveLab product family.

Your Steinberg Team.

About the program versions

The documentation covers two different operating systems (platforms); Windows and Mac OS X.

Where features and settings are specific to only one of the platforms, Windows or Mac OS X, this is clearly stated. In other words:

⇒ Unless specifically stated, all descriptions and procedures in the documentation are valid for both Windows and Mac OS X. The screenshots are taken from the Windows version of WaveLab LE.

Conventions

Key command conventions

Many of the default key commands in WaveLab LE use modifier keys, some of which are different depending on the operating system. For example, the default key command for Undo is [Ctrl]-[Z] under Windows and [Command]-[Z] under Mac OS X.

When key commands with modifier keys are described in this manual, they are shown with the Windows modifier key first, in the following way:

[Win modifier key]/[Mac modifier key]-[key]

For example:

- [Ctrl]/[Command]-[Z] means “press [Ctrl] under Windows or [Command] under Mac OS X, then press [Z]”.
- [Alt]/[Option]-[X] means “press [Alt] under Windows or [Option] under Mac OS X, then press [X]”.

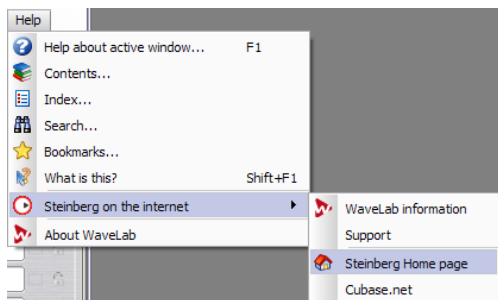
⇒ Please note that this manual often refers to “right-clicking”, for example to open context menus. If you are using a Macintosh computer with a single-button mouse, hold down [Ctrl] and click.

Selecting menu options

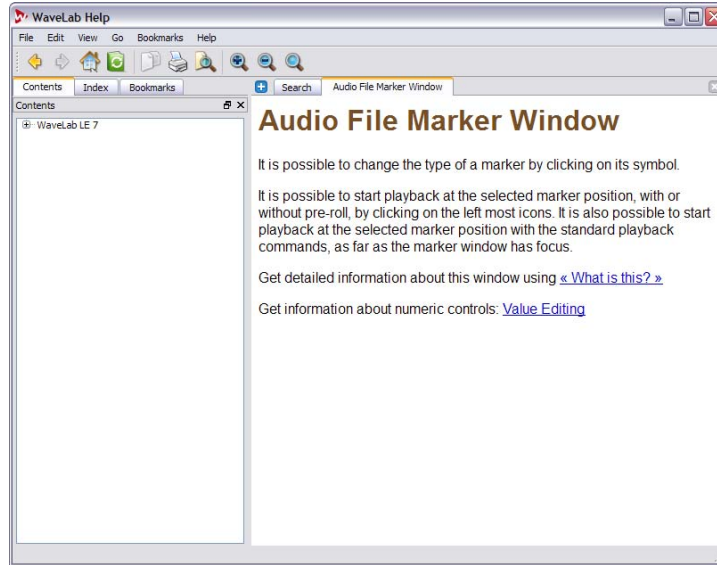
We use the following convention when describing menu selections:

▪ “Select **Help > Steinberg on the internet > Steinberg Home page**” means:

1. Click the Help menu item in the menu bar.
2. Open the “Steinberg on the internet” submenu.
3. Select the “Steinberg Home page” option.



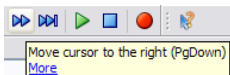
About the Help system



The document you are reading now contains everything you need to know to get started quickly with WaveLab LE. It does not contain any in-depth descriptions of features or workflows. These are covered in the comprehensive and context-sensitive Help system.

You can find help in the following ways:

- Hover the pointer over an icon or field to see a Tooltip; there is often a More link at the bottom of a Tooltip window, which you can click to get more detailed information.



- To see context-sensitive help on a particular button, field or other part of WaveLab LE's user interface, click the What is this? button, press Shift-F1, or select **Help > What is this?**.
The cursor will change to a question mark. Click on an item in the user interface to display relevant information in WaveLab LE's Help.



What is this? button

- To see context-sensitive help about the currently active window, press F1 or select **Help > Help about active window**.

- To access WaveLab LE's full online help, select **Help > Contents, Help > Index** or **Help > Search**.

The help is fully searchable, and you can save (bookmark) help topics that you refer to often.

How you can reach us

On the Help menu in WaveLab LE you will find items for getting additional information and help:

- Under **Help > Steinberg on the internet**, you can find links to various Steinberg web sites. Selecting one will automatically launch your browser application and open the appropriate page.

You can find support and compatibility information, answers to frequently asked questions, links for downloading new drivers, etc. This requires that you have a web browser application installed on your computer, and a working Internet connection.

2

Installation and setup

Minimum requirements

To use WaveLab LE, your computer must meet the following minimum requirements:

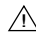
Windows

- Windows 7
- 2 GHz CPU
- 1024 MB RAM
- Windows MME- or ASIO-compatible audio hardware
- CD or DVD-ROM drive
- 200 MB of free hard disk space
- Display resolution of 1024x768 pixels

Macintosh

- Mac OS X 10.6
- Mac Intel CPU
- 1024 MB RAM
- CoreAudio compatible audio hardware
- CD or DVD-ROM drive
- 200 MB of free hard disk space
- Display resolution of 1024x768 pixels

General notes on how to set up your system

 On the Steinberg web site you can find detailed information on what to consider when setting up a computer system dedicated to audio work. From the Steinberg Home page, go to the DAW Components link on the Support page.

- **RAM** – There is a direct relation between the amount of available RAM and the number of windows and files that you can have open at any one time.

The amount of RAM specified above is the minimum requirement, but as a general rule “the more the better” applies.

- **Hard disk size** – The size of the hard disk determines how many minutes of audio you will be able to record. Audio files are relatively large. Approximately 10.6 MB of hard disk space is used up for every minute of 16-bit stereo/44.1 kHz audio recorded. For 24-bit/48 kHz audio or higher, the audio files are of course a lot bigger. Therefore we recommend a hard disk with enough space for your recordings.

- **Hard disk speed** – The speed of the hard drive also determines how quickly WaveLab LE can perform read/write operations (how quickly it can process audio files).

That is the quantity of information that the disk can read, usually expressed as “sustained transfer rate”. Again, “the more the better”.

- **Wheel mouse** – Although a mouse without a wheel will work fine with WaveLab LE, we recommend that you use a wheel mouse.

This will speed up value editing and scrolling considerably.

About audio cards

Please note:

- For serious work with WaveLab LE, we recommend that you use a card with MME or ASIO drivers (Windows) or CoreAudio drivers (Mac).

- If you use WaveLab LE to edit files for use with other hardware (such as a hard disk based recording system using its own audio converters) any loss in audio quality that you experience when listening to the files in WaveLab LE (due to deficiencies in the audio card) will not affect the final audio files in any way.

- For professional use (mastering, etc.) we recommend that you use a card capable of playing back files in 24-bit resolution.

Copy protection

WaveLab LE uses a software-based copy protection scheme. The so-called Soft-eLicenser is installed and activated automatically as part of the installation process of WaveLab LE.

After installation, WaveLab LE is ready for use – you do not need to do anything else.

Install WaveLab LE

The installation procedure automatically unpacks all the files and puts them in the right places.

1. Insert the Steinberg WaveLab LE DVD into your disk drive.

Depending on your system, the WaveLab LE Start Center program on the DVD may start automatically. If no interactive start screen appears, open the DVD and double-click the icon "WaveLab LE Start Center" to launch the interactive start screen.

2. Click a flag to select your language.
3. Click the Install button.
4. Follow the on-screen instructions.
5. When you see a message saying that the installation was successful, click the Close button.

At this point, you can browse through the additional options and information on the Start Center DVD.

6. Click the Exit button at the bottom right of the Start Center window to quit the Start Center application.

7. Eject the DVD.

Installing manually

In case you do not want to install WaveLab LE via the interactive start screen, follow the procedure below:

1. Start the installation:

Windows: Double-click the file called Setup.exe.

Macintosh: Double-click the file called "WaveLab LE 7.mpkg".

2. Follow the instructions on screen.

Register your software

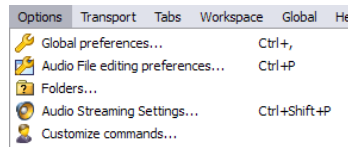
We encourage you to register your software! By doing so you are entitled to technical support and kept aware of updates and other news regarding WaveLab LE.

Proceed as follows:

Go to www.steinberg.net/mysteinberg, log in to the exclusive MySteinberg online customer portal and register your product by following the instructions on screen.

Set up the application preferences

WaveLab LE is highly configurable. All the preference dialogs are in the Options menu:



- Global preferences.

In this dialog you can specify settings that apply to the whole WaveLab LE application and its workspaces, such as the language, user interface and startup options.

- Audio File editing preferences.

In this dialog, you can make settings for Editing (Display, Playback Browser, Snap to zero-crossing, etc.), File Type (e.g. 32-bit) and Style (colors used for waveforms, background and other elements).

- Favorite folders.

In this dialog you can set the preferred folders for saving and opening different types of file (temporary files, audio files, and Podcasts) and control whether they are updated automatically.

- Audio streaming settings.

In this dialog you can specify the Audio devices used for recording and playback, along with various options such as number of buffers and pre/post roll times.

- Customize commands.

In this dialog you can create your own shortcuts. Bear in mind that many shortcuts are context-sensitive.

3

Quick tour

Introduction

The following sections introduce you to some of WaveLab LE's main windows.

WaveLab LE user interface (GUI)

WaveLab LE is highly customizable. You can set up your workspace exactly as you want it:

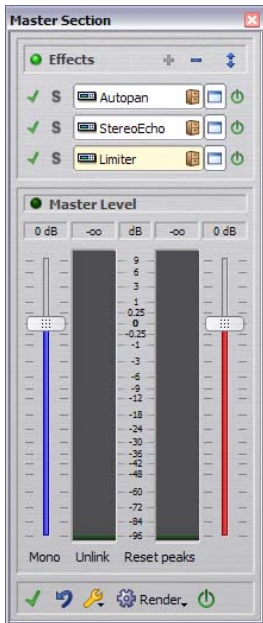
- Drag WaveLab LE's panels around and dock them to different places in the main application window. Try it!
- Make panels float as separate windows, if you like.
- WaveLab LE also makes use of tabs.

If you have more than one Audio File open, they appear as tabbed sections in the main application window, rather than as separate windows.

Master Section

The Master Section is found at the end of the WaveLab LE signal path, before your audio material is passed on to the audio hardware, or before it is rendered to disk as an audio file. This is where you set the master volume, and add global effects. The Master Section includes:

- Three effects slots
- Master level faders
- Render function to create a final audio master file



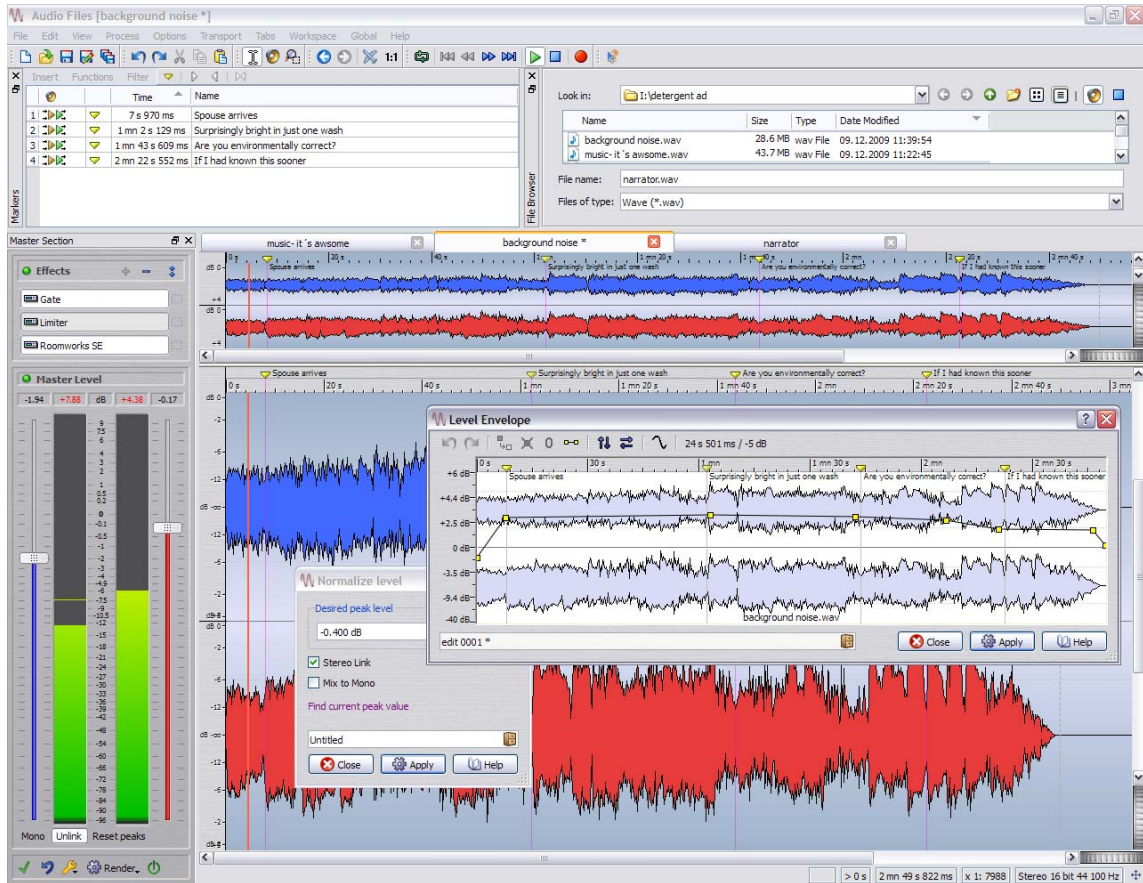
The Master Section is shared by the Audio Files and Audio Montage workspaces (it is a "shared tool"). You can have either or both of these workspaces open at the same time, but the Master Section will only be active in one workspace at any one time.

You have complete control over how the Master Section is displayed.

- You can have the Master Section as an independent floating window, or dock it to the Audio Files or Audio Montage workspace in a frame.
- To bring the 'active' workspace (that currently 'owns' the Master Section) to the foreground, select **Global > Master Section**.
- To show or hide the Master Section's frame in the Audio Files or Audio Montage workspace, select **Workspace > Shared tool windows > Master Section**.

You can dock this shared tool window, or have it float. Note that the two workspaces do not have to have the same setting here: you might want for example to have the Master Section docked in the Audio Files workspace, and not visible in the Audio Montage workspace.

Editing



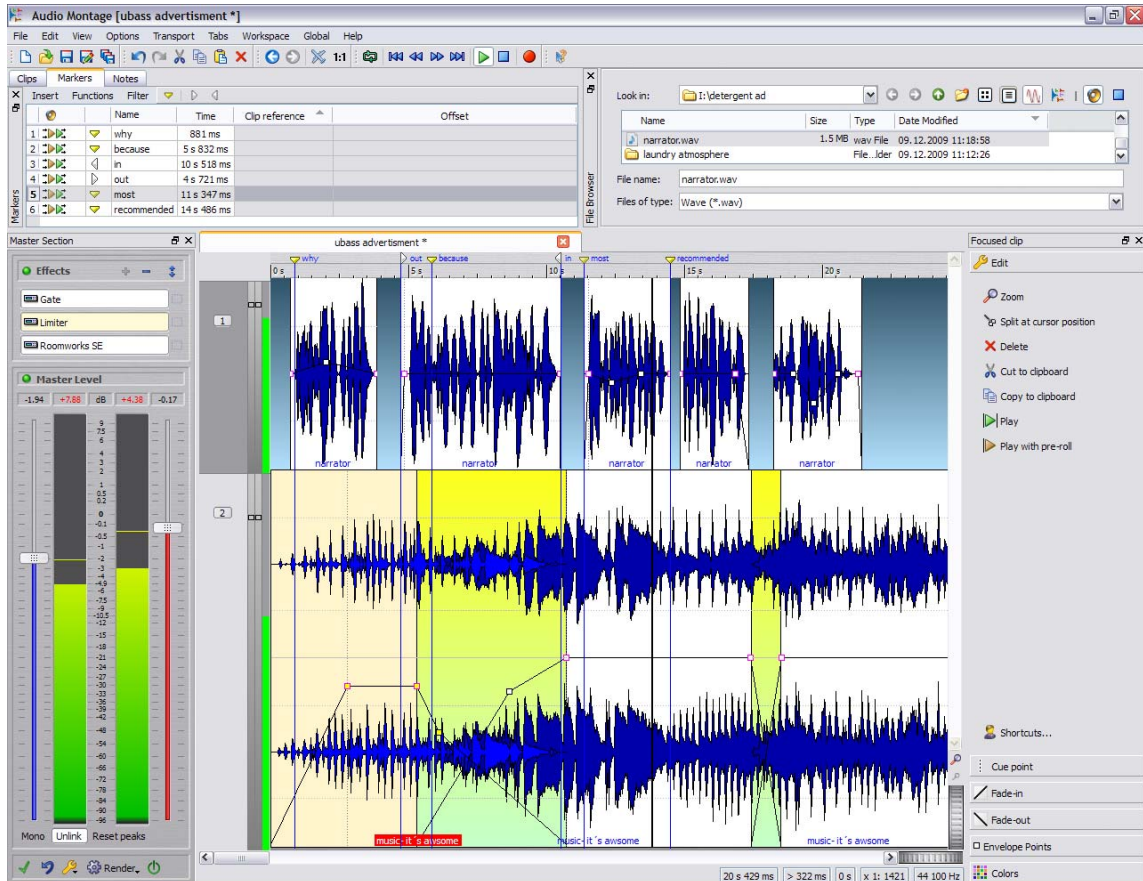
The Audio Files window is your main editor for working on individual audio files.

WaveLab LE allows you to open, edit and save audio files of various formats. You can always undo any edits you have made. As well as being able to cut, copy and paste audio sections, you can apply processes such as normalization, and create level envelopes or fades. You find these features in the various options and dialogs of the Edit menu and the Process menu.

You can open audio files in the Wave window using the following methods:

- Select **File > Open**, browse to an audio file and click Open.
- Browse to an audio file using WaveLab LE's File Browser, and double-click to load it. If WaveLab LE's File Browser is not visible, select **Workspace > Specific tool windows > File Browser**.
- Drag and drop from the Windows Explorer/Mac Finder.

Audio Montage



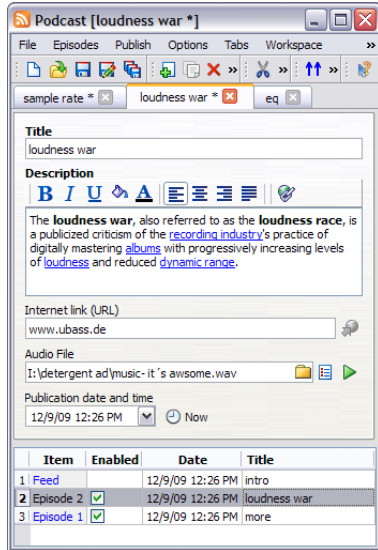
The Audio Montage provides a track-based working environment (one mono, one stereo, two mono, two stereo, or one mono and one stereo track).

Here you can combine (mix) multiple audio files on up to two tracks to create new mixes of your music, radio plays, commercials and so on.

You can open a new (empty) Audio Montage workspace (select **Global > Audio Montage Workspace**), or create an Audio Montage from a file you are working on in the Audio Files workspace (select **Edit > Create Audio Montage from Audio File**).

Audio Montages have their own file type (.mon).

Podcast



WaveLab LE allows you to make your audio available on the Internet in the form of Podcasts. A simple and intuitive user interface allows you to create Podcasts without quitting WaveLab.

For example, if you are working on an audio file in in the Audio Files workspace, select **Edit > Create Podcast from Audio File**. If you do not have an audio file open, and want to start a new Podcast file, select **Global > Podcast Workspace**.

Podcasts have their own file type (.pdc).